

INDEX

INDEX - Alphabetical Listing of Electrical Circuits

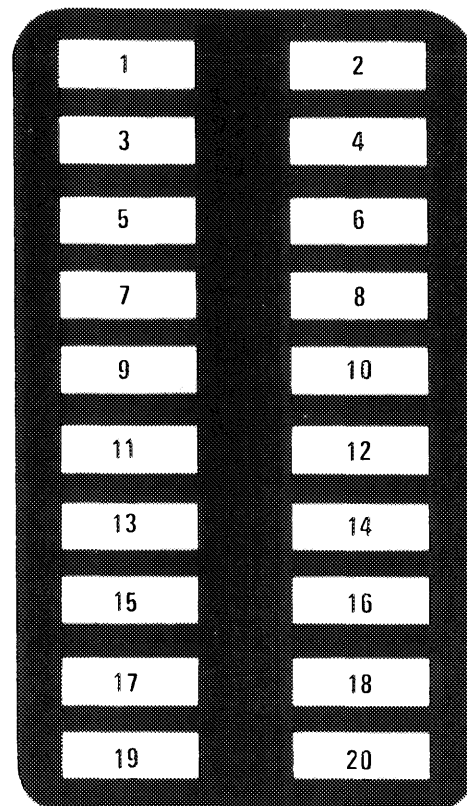
	SCHEMATIC	COMPONENT LOCATION		SCHEMATIC	COMPONENT LOCATION
Air Injection Management ...	109.....	201	Lights (continued)		
Automatic Antenna	131.....	202	—Glove Box	123.....	203
Automatic Climate Control...	127		—Hazard	116.....	207
Auxiliary Fan	126.....	204	—Headlights	112.....	203
Charging System	110.....	202	—Instrument Cluster.....	118.....	204
Cigar Lighter	131.....	202	—License	115.....	205
Clock	120.....	207	—Marker	115.....	205
Cruise Control	113.....	207	—Park	114.....	205
Fuel Delivery	107.....	204	—Stop	113.....	207
Fuse Information	102		—Tail	114.....	205
Gauges	118.....	207	—Trunk	115.....	205
Ground Distribution	133		—Turn Signal	116.....	207
Heated Seats	132.....	203	Power Distribution	104.....	206
Horns	126.....	204	Power Windows	129.....	206
Idle Speed Stabilization	109.....	201	Radio	131.....	202
Ignition	107.....	204	Rear Defogger	128.....	206
Lambda Control	108.....	205	Sliding Roof	128.....	206
Lights			Start	106.....	206
—Backup	111.....	202	Tachometer	118	
—Center Console	119, 124	204	Transmission Kickdown	111.....	202
—Courtesy	121	203	Warning Indicators	118.....	207
—Fog Lights	112	203	Warning System	117.....	208
			Wiper/Washer	125.....	208

Fuse-Circuit List

Fuse		Circuits Protected	Page
No.	Amps (color)		
1	8(WT)	Automatic Antenna	131
		Clock	119
		Courtesy Lights	121
		Lights: Hazard	116
		Radio	131
		Trunk Light	115
		Warning System	117
2	16(PK)	Auxiliary Fan	126
3	16(PK)	Power Windows	129
4	16(PK)	Power Windows	129
5	16(PK)	Horns	126
		Sliding Roof	128
6	16(PK)	Automatic Climate Control	127
7	16(PK)	Heated Seats	132
		Rear Defogger	128
8	8(WT)	Backup Lights/Transmission Kickdown	111
		Warning System	117
9		NOT USED	
10	8(WT)	Auxiliary Fan	126
		Lights: Turn Signal	116
		Power Windows	129
		Stoplights/Cruise Control	113
		Warning Indicators/Gauges	118

Fuse		Circuits Protected	Page
No.	Amps (color)		
11	16(PK)	Headlights/Fog Lights	112
		Wiper/Washer	125
12	8(WT) *16(PK)	Cigar Lighter/Radio	131
		Glove Box Light	123
		*With Heated Seats	132
13	8(WT)	Illumination: Instrument Cluster/ Center Console	204
		Lights: Marker/License	115
		Lights: Park/Tail (RH)	114
14	2	NOT USED	126
15	16(PK)	NOT USED	
16	8(WT)	Lights: Park/Tail (LH)	114
17	8(WT)	Headlights (RH High Beam)	112
18	8(WT)	Headlights (LH High Beam)	112
19	16(PK)	Headlights (RH Low Beam)/Fog Lights	112
20	8(WT)	Headlights (LH Low Beam)	112
AUX FUSE BOX	2	Automatic Climate Control	127

FUSE BOX



FUSE BOX

(AS MOUNTED IN RH KICK PANEL)

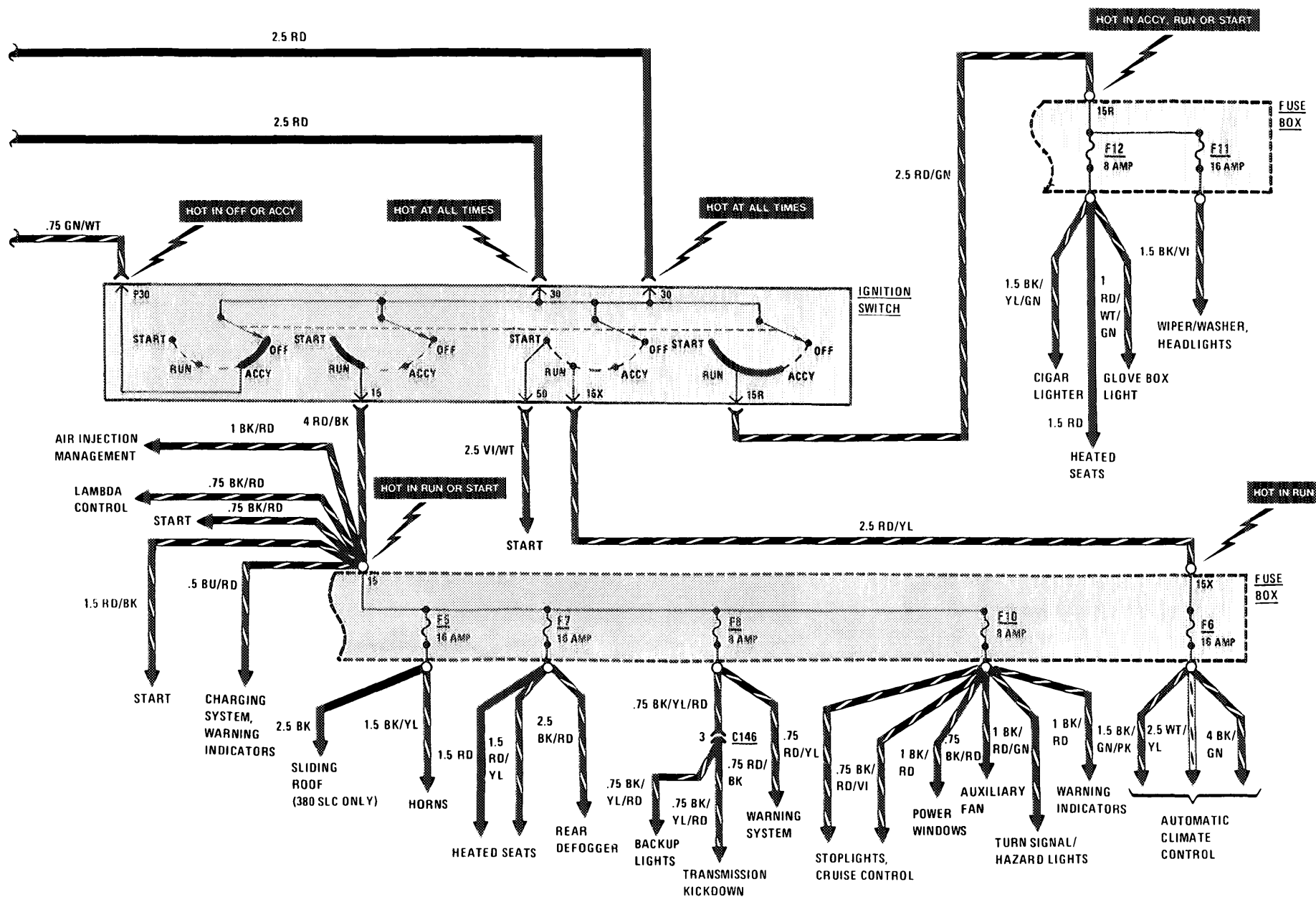
RELAY CODE	RELAY USE
6	Auxiliary Fan Relay
10	Window Relay
21	Electronic Fuel Pump Relay

(For Component Locations See Page 206)



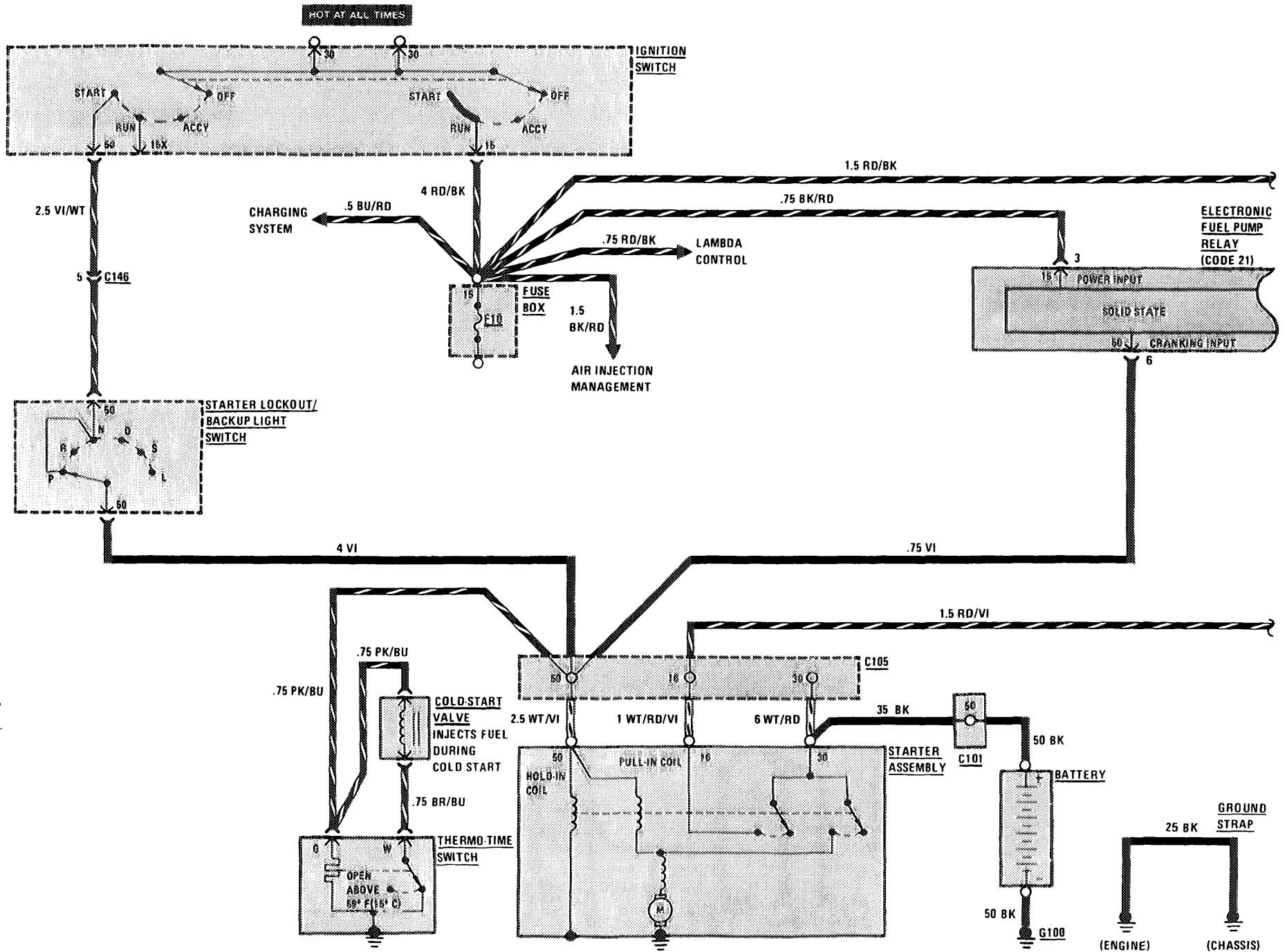
POWER DISTRIBUTION

(For Component Locations See Page 206)



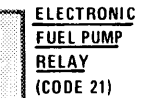
START

(For Component Locations See Page 206)



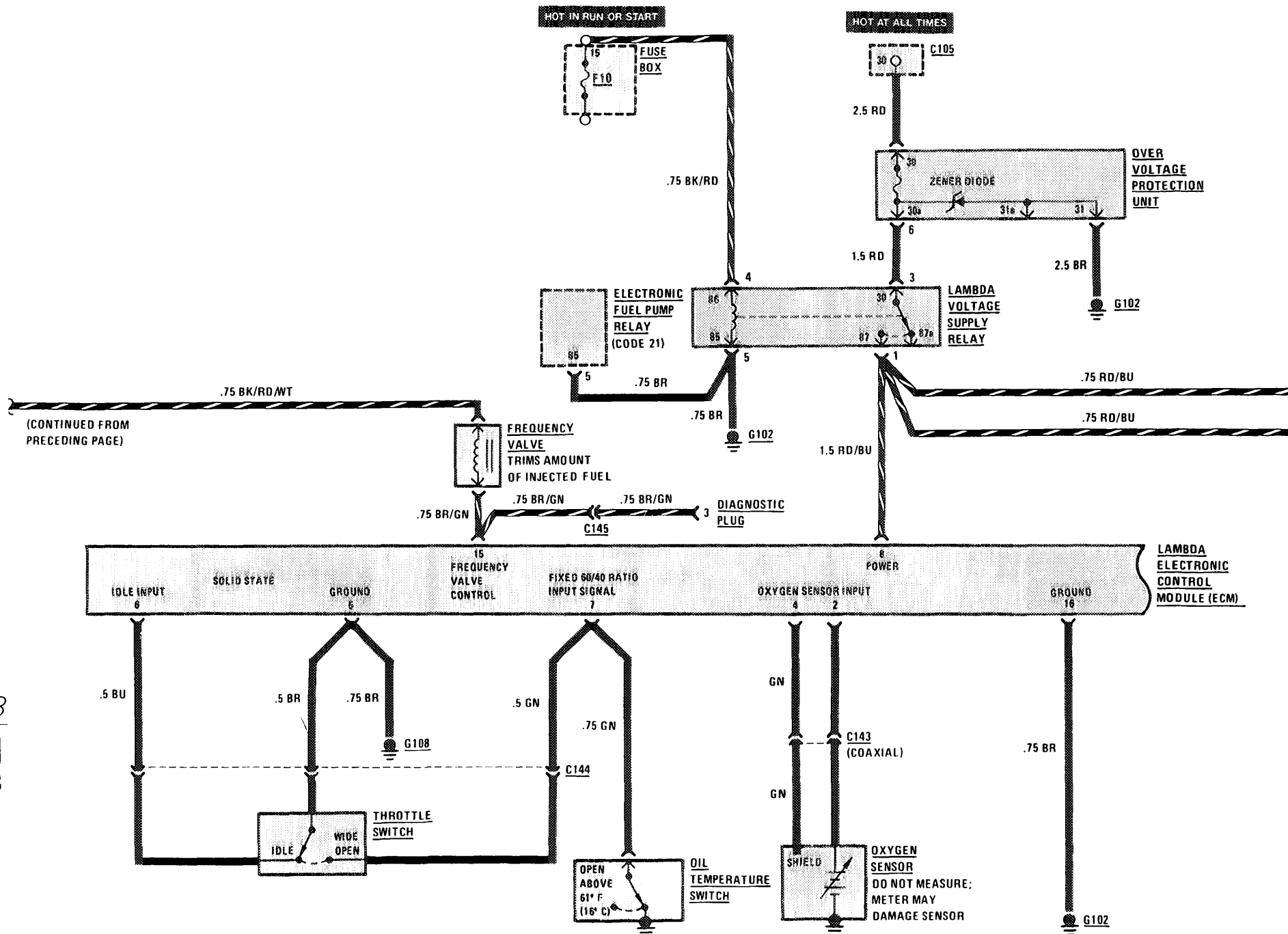
(For Component Locations See Page 204)

(For Component Locations See Page 204)



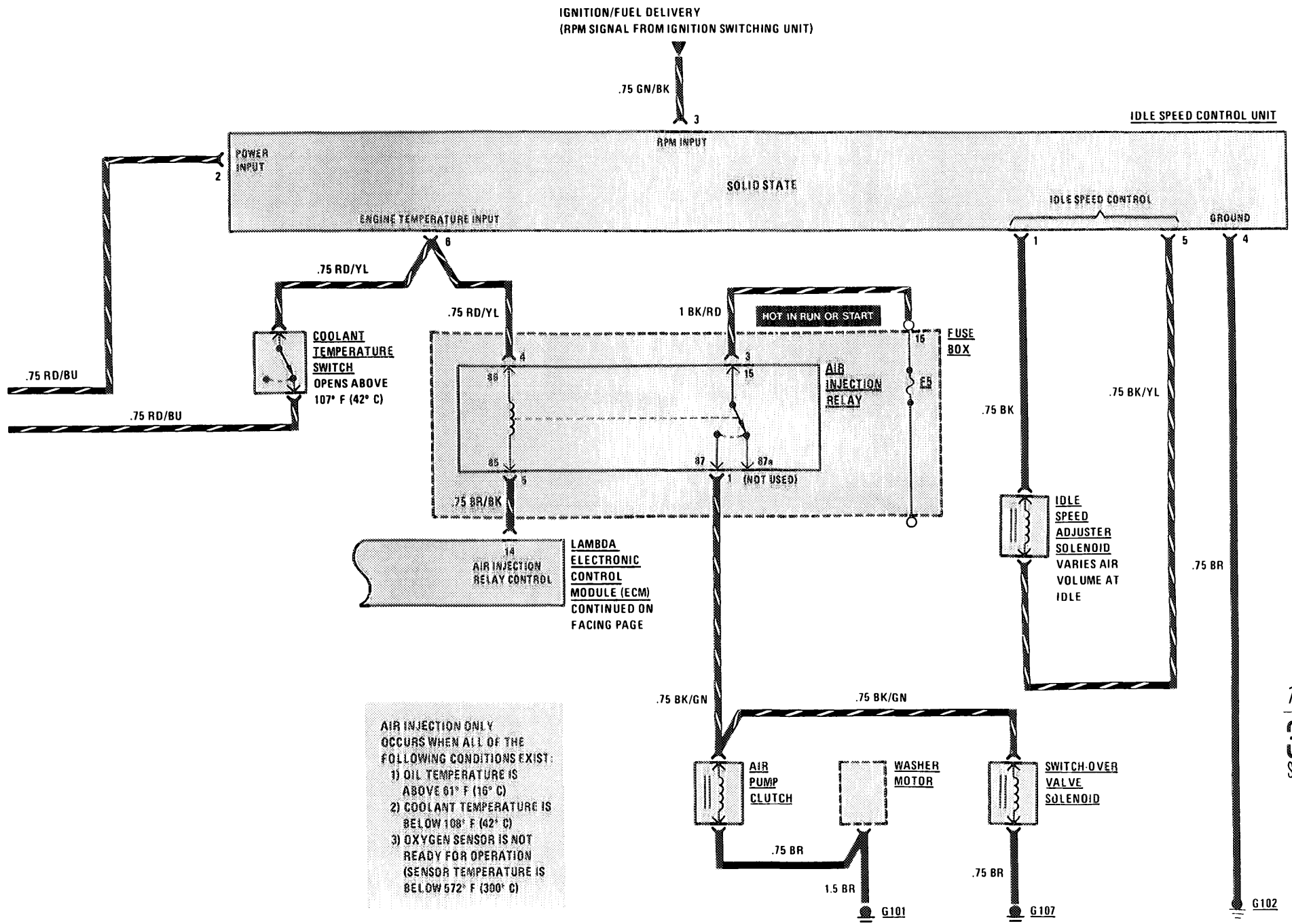
LAMBDA CONTROL

(For Component Locations See Page 205)



AIR INJECTION MANAGEMENT/IDLE SPEED STABILIZATION

(For Component Locations See Page 201)



AIR INJECTION ONLY OCCURS WHEN ALL OF THE FOLLOWING CONDITIONS EXIST:

- 1) OIL TEMPERATURE IS ABOVE 61° F (16° C)
- 2) COOLANT TEMPERATURE IS BELOW 108° F (42° C)
- 3) OXYGEN SENSOR IS NOT READY FOR OPERATION (SENSOR TEMPERATURE IS BELOW 572° F (300° C))

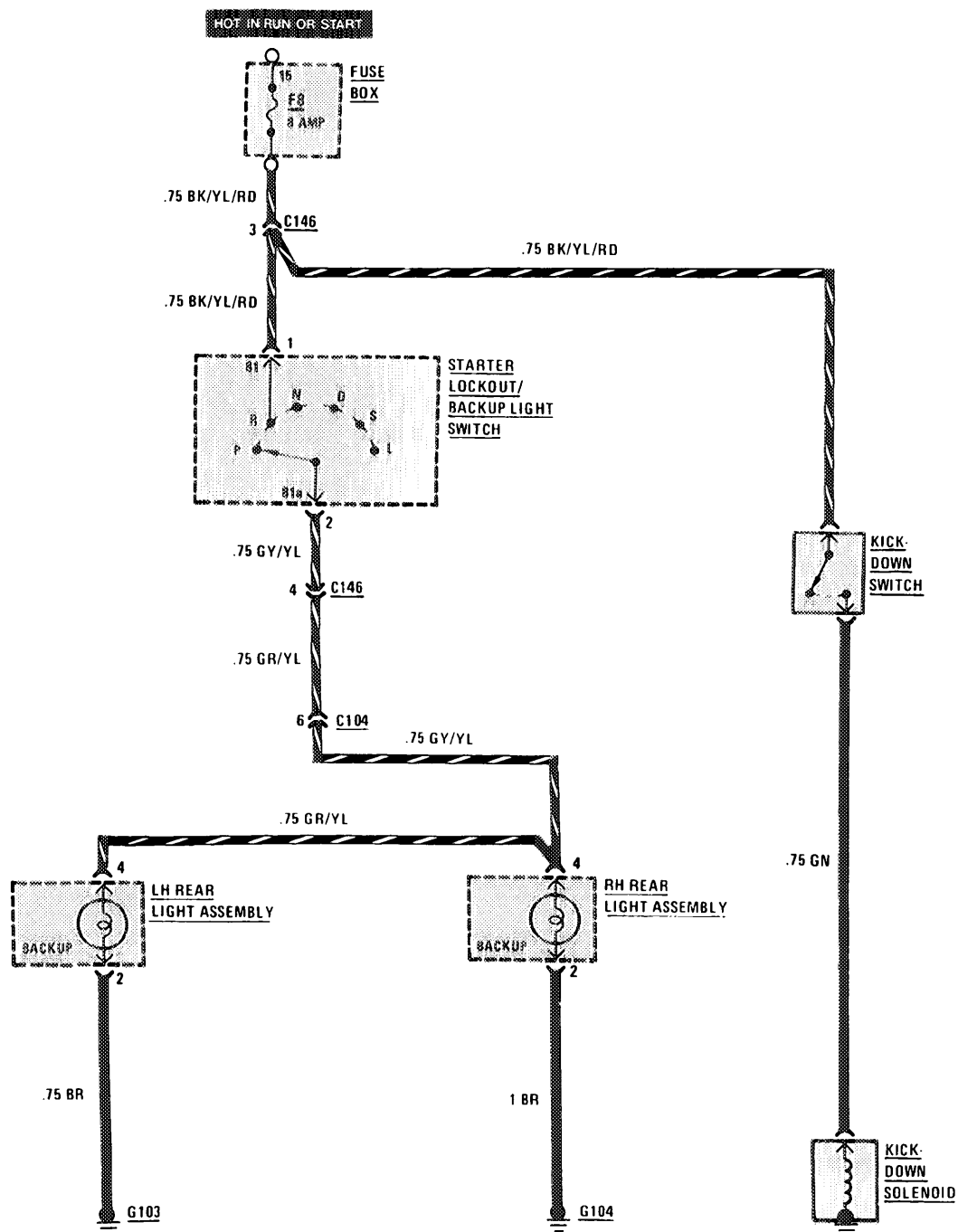
(For Component Locations See Page 202)

2.5 RD



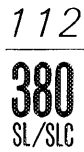
TRANSMISSION KICKDOWN/BACKUP LIGHTS

(For Component Locations See Page 202)



(For Component Locations See Page 203)

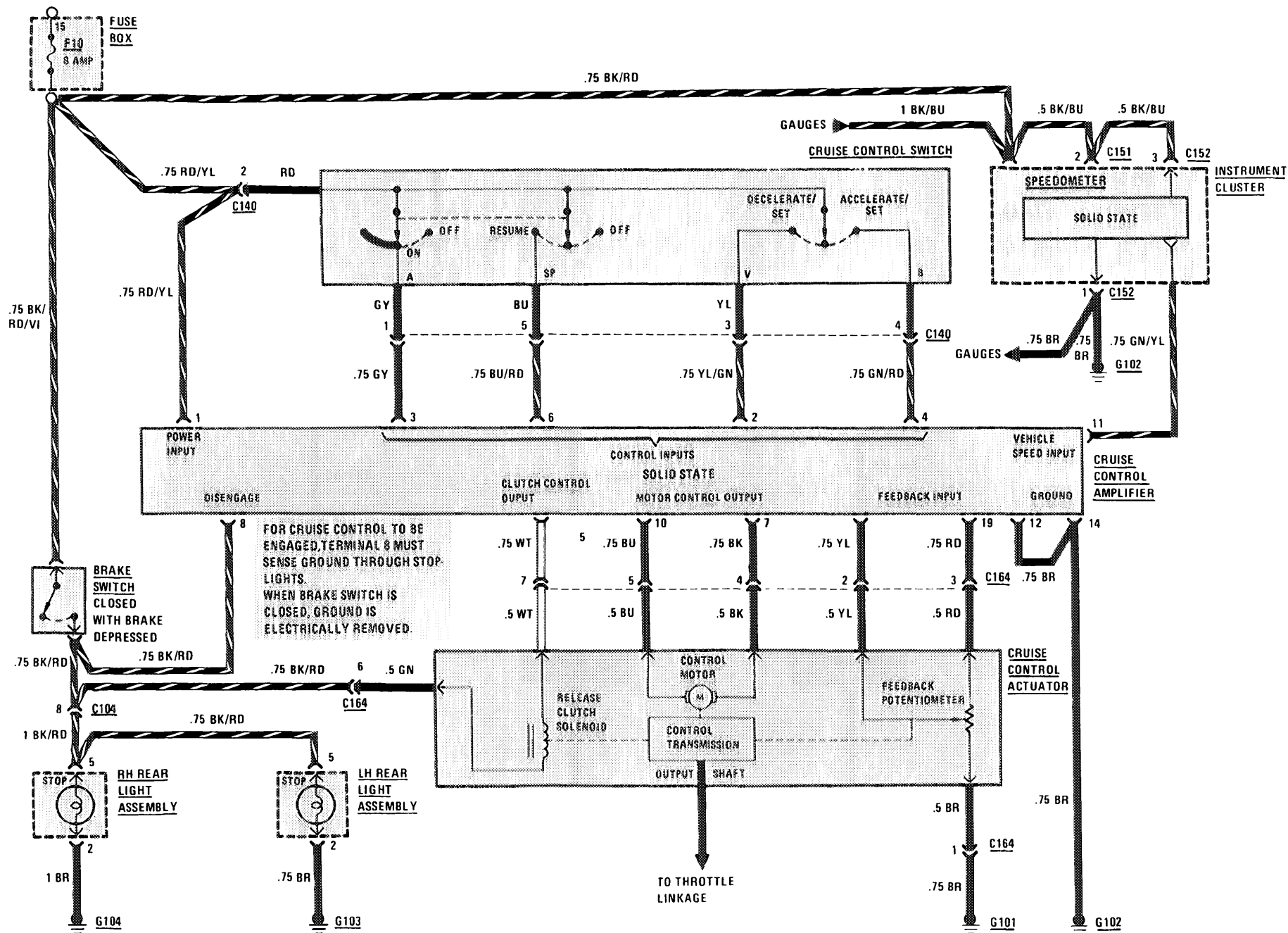
(For Component Locations See Page 203)



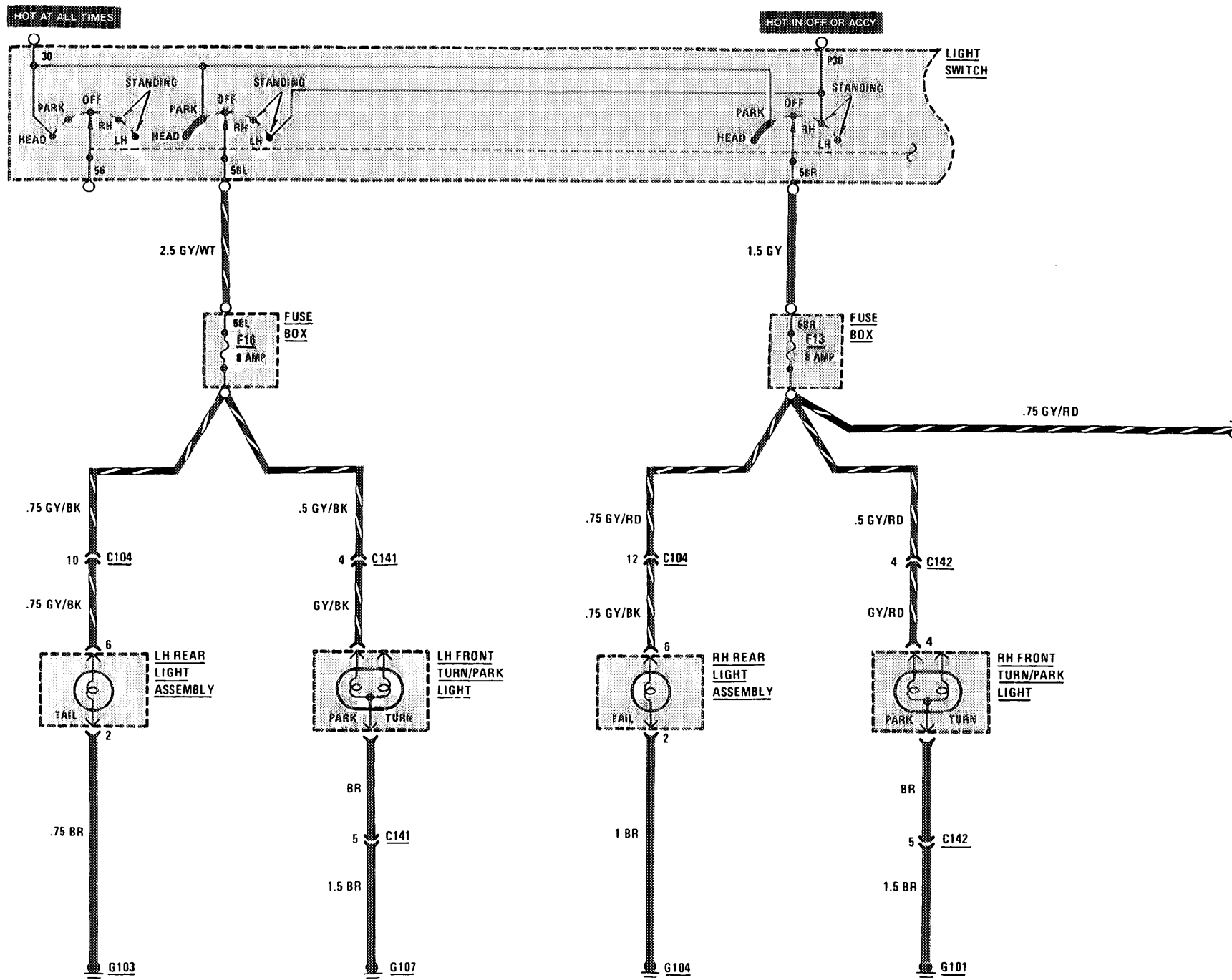
STOPLIGHTS/CRUISE CONTROL

(For Component Locations See Page 207)

HOT IN RUN OR START



(For Component Locations See Page 205)



LIGHTS: MARKER/LICENSE/TRUNK

(For Component Locations See Page 205)

