

INDEX

MODEL	SALES DESIGNATION
107.048.....	560 SL

CIRCUIT	PAGE	CIRCUIT	PAGE
Air Injection Management	107/5	Lamps (continued)	
Anti-Lock Brake System	126	—Glove Box	109
Anti-Theft Alarm System	128	—Hazard	113
Automatic Antenna	122	—Headlamps	110
Automatic Climate Control	301	—Instrument Cluster	117
Auxiliary Fan	118	—License	112/1
Central Locking System	127	—Marker	112/1
Charging System	108	—Park	112
Cigar Lighter	122	—Stop	111
Clock	115/2	—Tail	112
Component Locations	201	—Trunk	112/1
Cruise Control	111	—Turn Signal	113
Diagnostic Socket	107/2, 107/3	—Vanity	116/1
Electronic Engine Controls	107/3, 107/4	Outside Heated Mirrors	124
Fuel Delivery	107	Outside Temperature Display	115/2
Fuse/Relay Box	103	Power Distribution	104
Fuse-Circuit List	102	Power Distribution—ACC	136
Gauges	115	Power Windows	121
Ground Distribution	131	Radio	122
Ground Distribution — ACC	136	Rear Defogger	120
Heated Seats	123	Start	106
Horns	118	Supplemental Restraint System	125
Idle Speed Stabilization	107/5	Tachometer	115/3
Ignition	107/2	Transmission Kick-down	107/1
Lamps		Warning Indicators	115
—Backup	109	Warning System	114
—Center Console	117	Wiper/Washer	119
—Courtesy	116		
—Fog Lamps	110		

REVISIONS:

FUSE-CIRCUIT LIST

AS OF MY 1986

Fuse		Circuits Protected	Connection to Circuit	Page
No.	Amps (Color)			
1	8 (WT) ①	Cigar Lighter/Radio Glove Box Lamp Heated Seats	15R	122 109 123
2	16 (PK)	Headlamps Wiper/Washer	15R	110 119
3	16 (PK)	Power Windows (Right)	15	121
4	16 (PK)	Power Windows (Left)	15	121
5	8 (WT)	Anti-Lock Brake System Anti-Theft Alarm System Headlamps/Fog Lamps Power Windows Stop Lamps/Cruise Control Turn Signal/Hazard Lamps Warning Indicators and Tachometer	15	126 129 110 121 111 113 115/3
6	16 (PK)	Automatic Climate Control	15X	313
7	8 (WT)	Air Injection Management Automatic Climate Control Auxiliary Fan Backup Lamps Transmission Kick-Down Outside Temperature Display Warning System Heated Windshield Washer Nozzles	15	107/5 313 118 109 107/1 115/2 114 119
8	8 (WT)	Horns Outside Heated Mirrors	15	118 124
9		Not Used		
10	16 (PK)	Anti-Theft Alarm System Rear Defogger	15	129 120

Fuse		Circuits Protected	Connection to Circuit	Page
No.	Amps (Color)			
11	8 (WT)	Anti-Theft Alarm System Central Locking System	30	129 127
12	8 (WT)	Anti-Theft Alarm System Automatic Antenna Clock Courtesy Lamps Radio Trunk Lamp Turn Signal/Hazard Lamps Warning System	30	129 122 115/2 116 122 112/1 113 114
13	8 (WT)	Anti-Theft Alarm System Illumination: Instrument Cluster/Center Console Lamps: Marker/License Lamps: Park/Tail (Right) Warning System	58R	130 117 112/1 112 114
14	16 (PK)	Auxiliary Fan	30	118
15	8 (WT)	Fog Lamps ②	58L	110
16	8 (WT)	Anti-Theft Alarm System Lamps: Park/Tail (Left)	58L	130 112
17	8 (WT)	Headlamps (Right High Beam)	56a	110
18	8 (WT)	High Beam Indicator Headlamps (Left High Beams)	56a	115/2 110
19	8 (WT) ③ 16 (PK)	Headlamps (Right Low Beam) Fog Lamps ④	56b	110
20	8 (WT)	Headlamps (Left Low Beam)	56b	110

AUXILIARY FUSE HOLDER

	16 (PK) ⑤	Anti-Theft Alarm System	30	128
--	-----------	-------------------------	----	-----

REVISIONS: ① 16 AMP (PINK) WHEN EQUIPPED WITH HEATED SEATS

④ AFTER A038208 (MY 1986)

② NOT USED AFTER A038208 (MY 1986)

⑤ TWO 16 AMP FUSES ARE USED IN F14 AUXILIARY FUSE HOLDER

③ 8 AMP BEFORE A038208; 16 AMP AFTER A038208 (MY 1986)

FUSE/RELAY BOX

AS OF MY 1986

RELAY CODE	RELAY USE
No Code	Heated Rear Window Relay
No Code	Overvoltage Protection Relay
10	Power Window Relay
32	Air Injection Management Relay

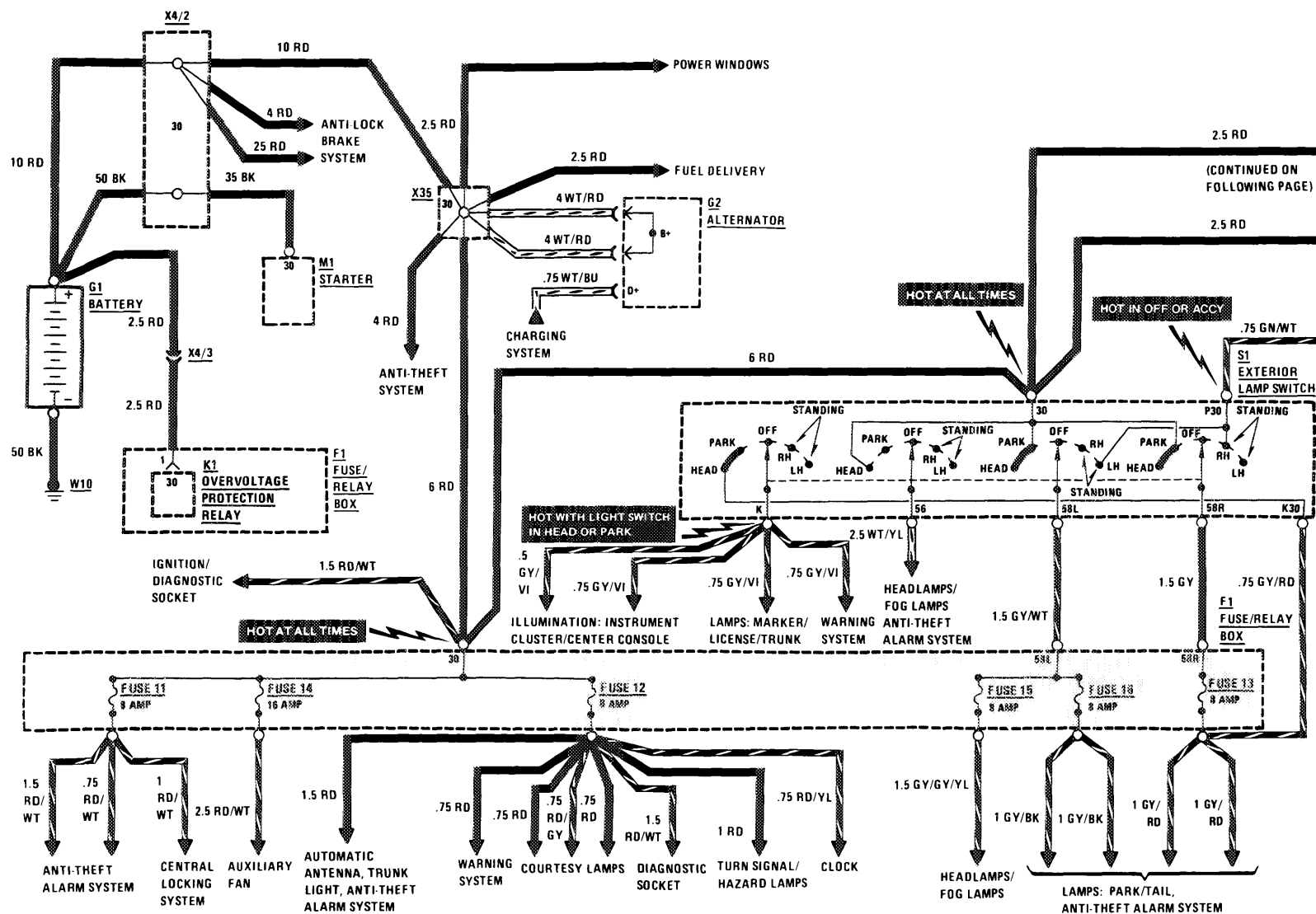
NOTE: Relays are shown in their typical position. They can be arranged in different positions. Use codes to determine proper relay.

REVISIONS:

POWER DISTRIBUTION

(For Component Locations See Page 210)

MY 1986

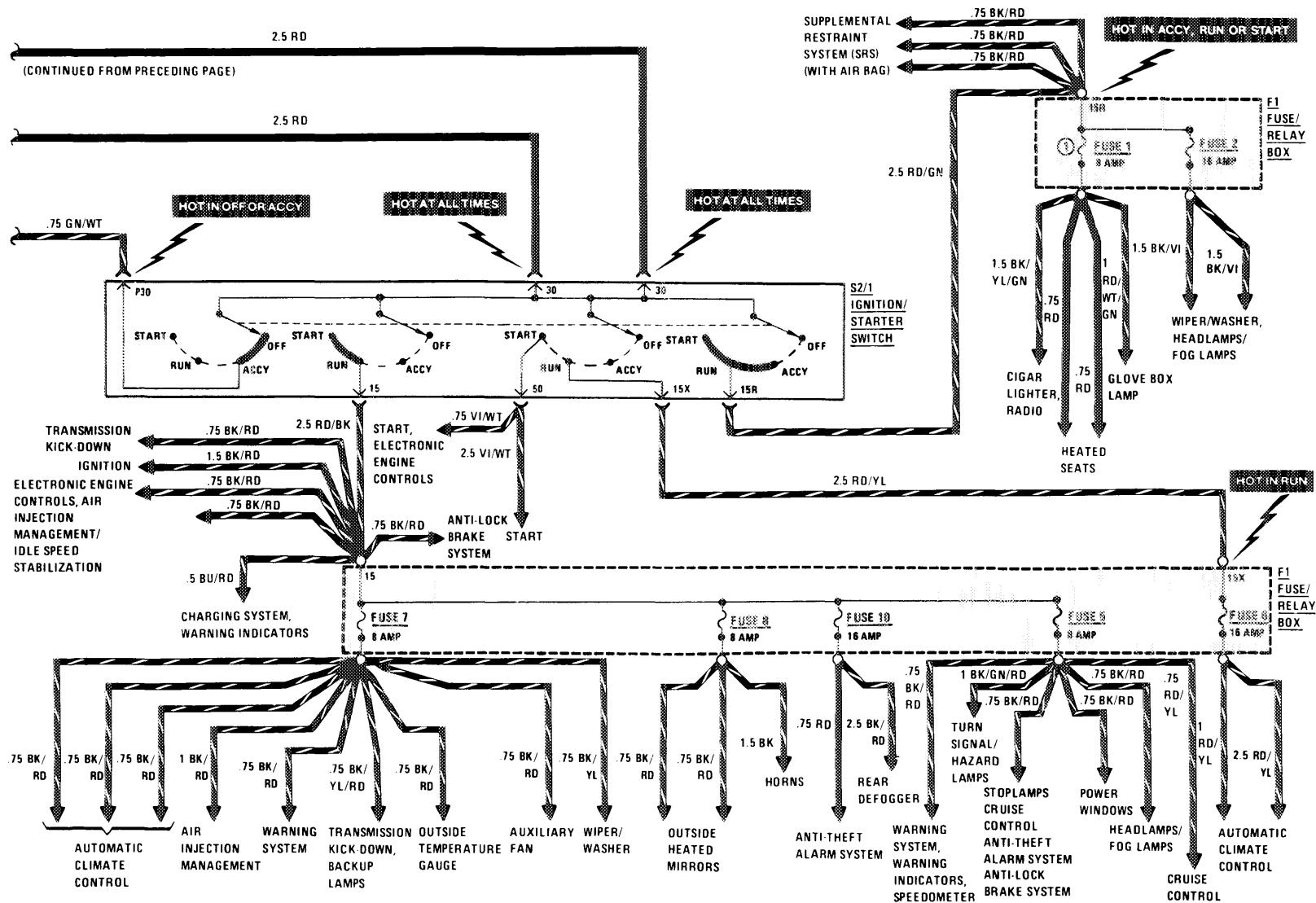


REVISIONS:

POWER DISTRIBUTION

(For Component Locations See Page 210)

MY 1986

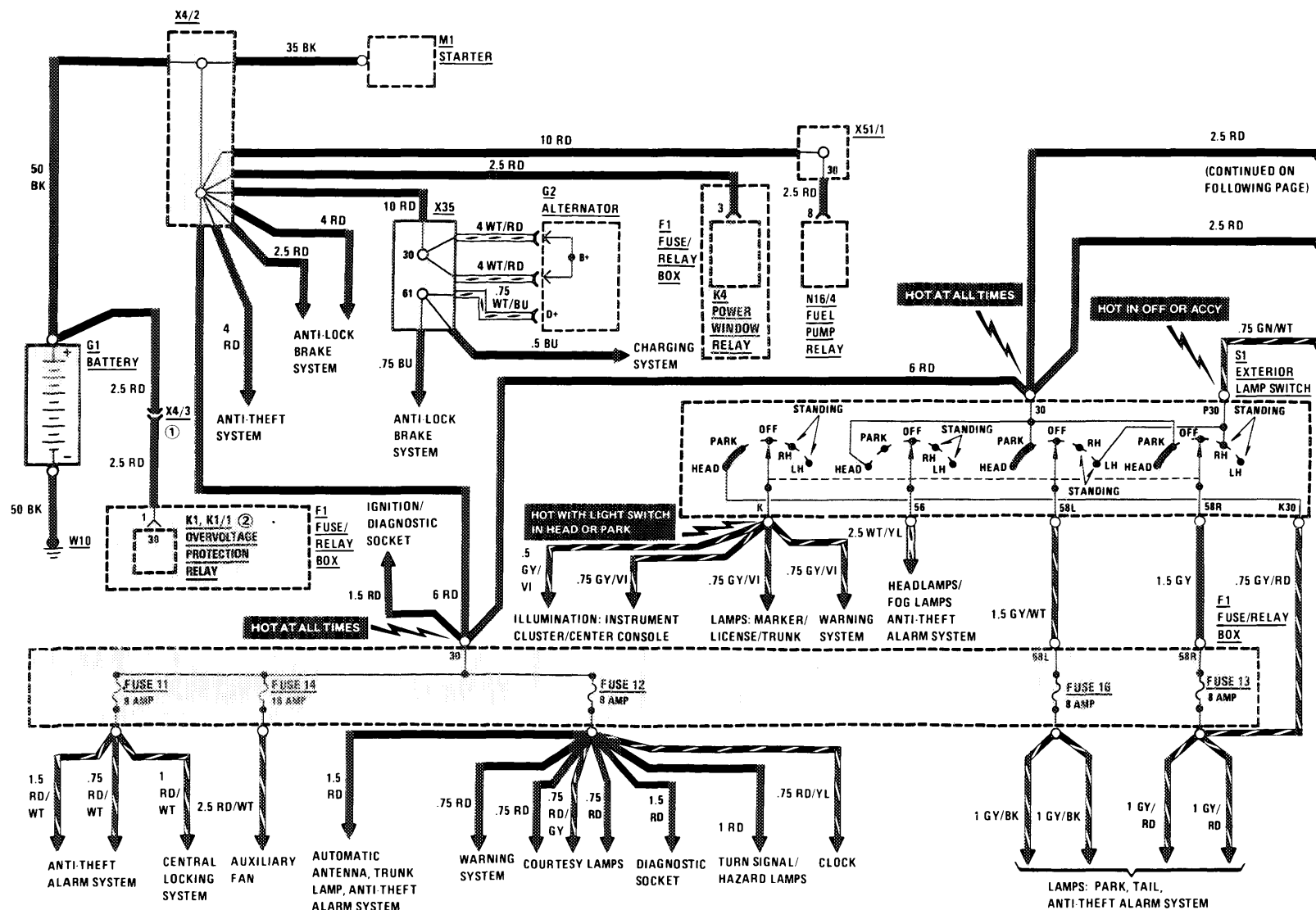


REVISIONS: ① 16 AMP (WHEN EQUIPPED WITH HEATED SEATS)

POWER DISTRIBUTION

(For Component Locations See Page 210)

AS OF MY 1987



REVISIONS: ① FEDERAL VERSION ONLY
② CALIFORNIA VERSION

105/1

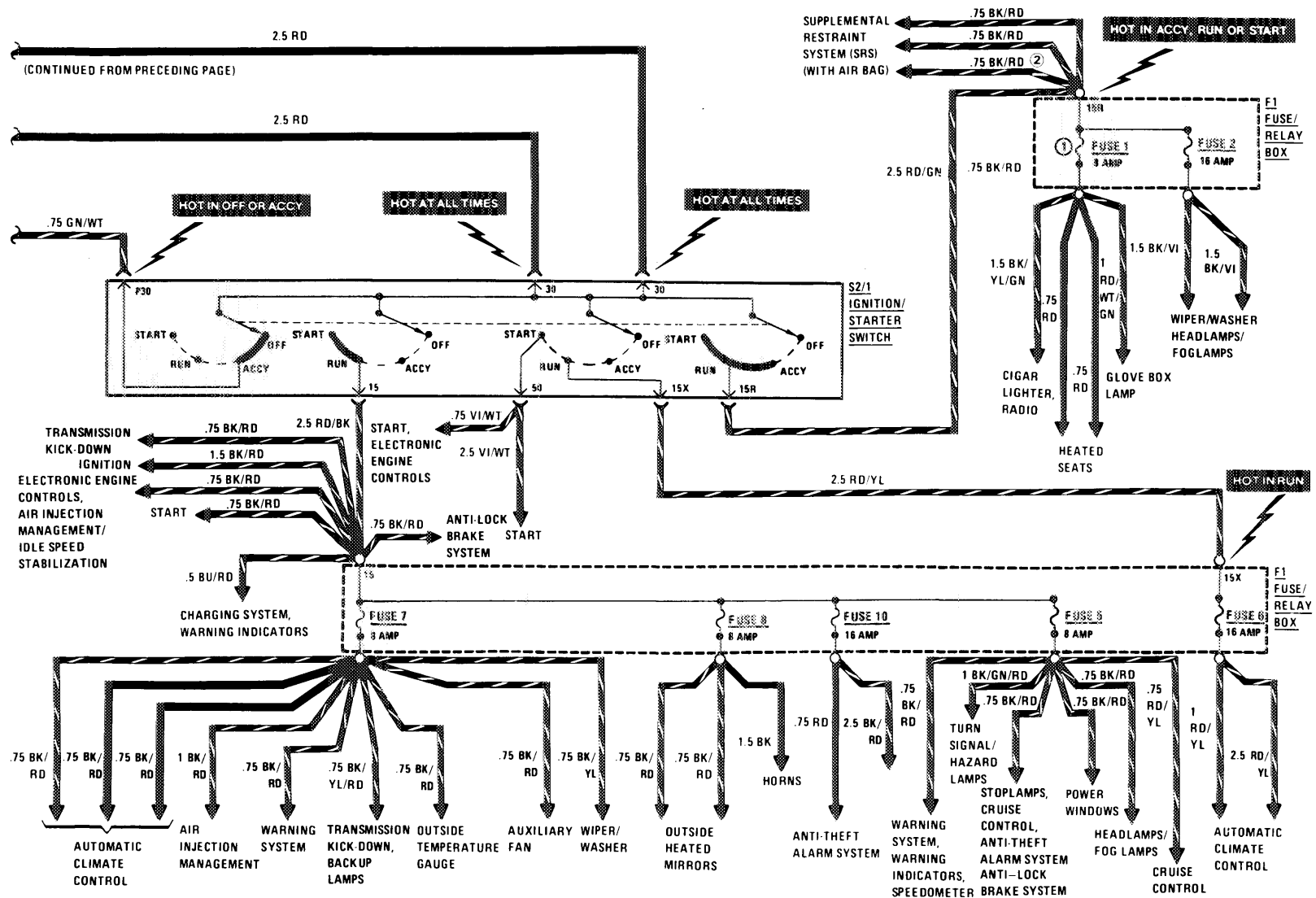
107.048

3/88

POWER DISTRIBUTION

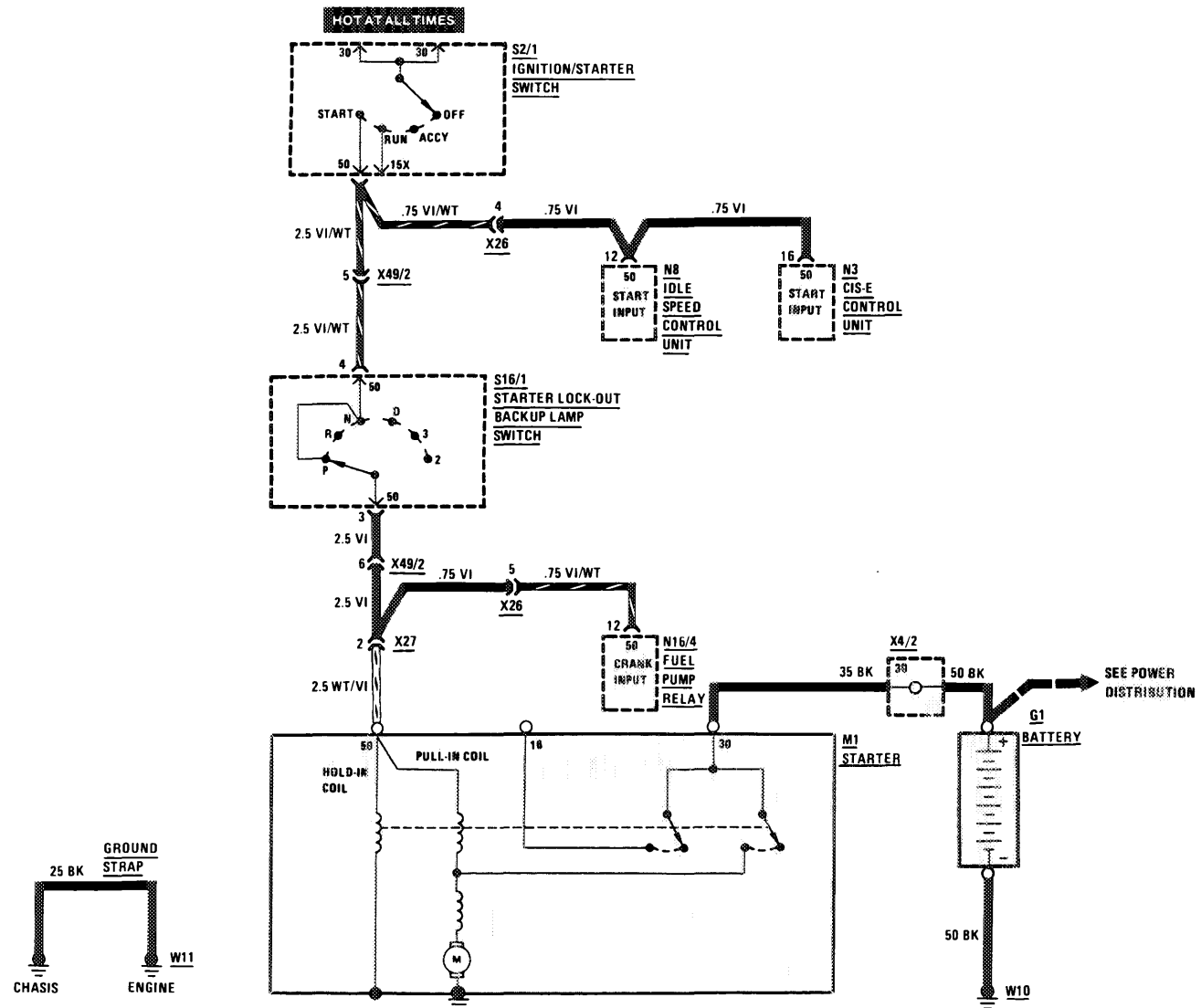
(For Component Locations See Page 210)

AS OF MY 1987



REVISIONS: ① 16 AMP (WHEN EQUIPPED WITH HEATED SEATS)
② MY 1987 ONLY

(For Component Locations See Page 211)

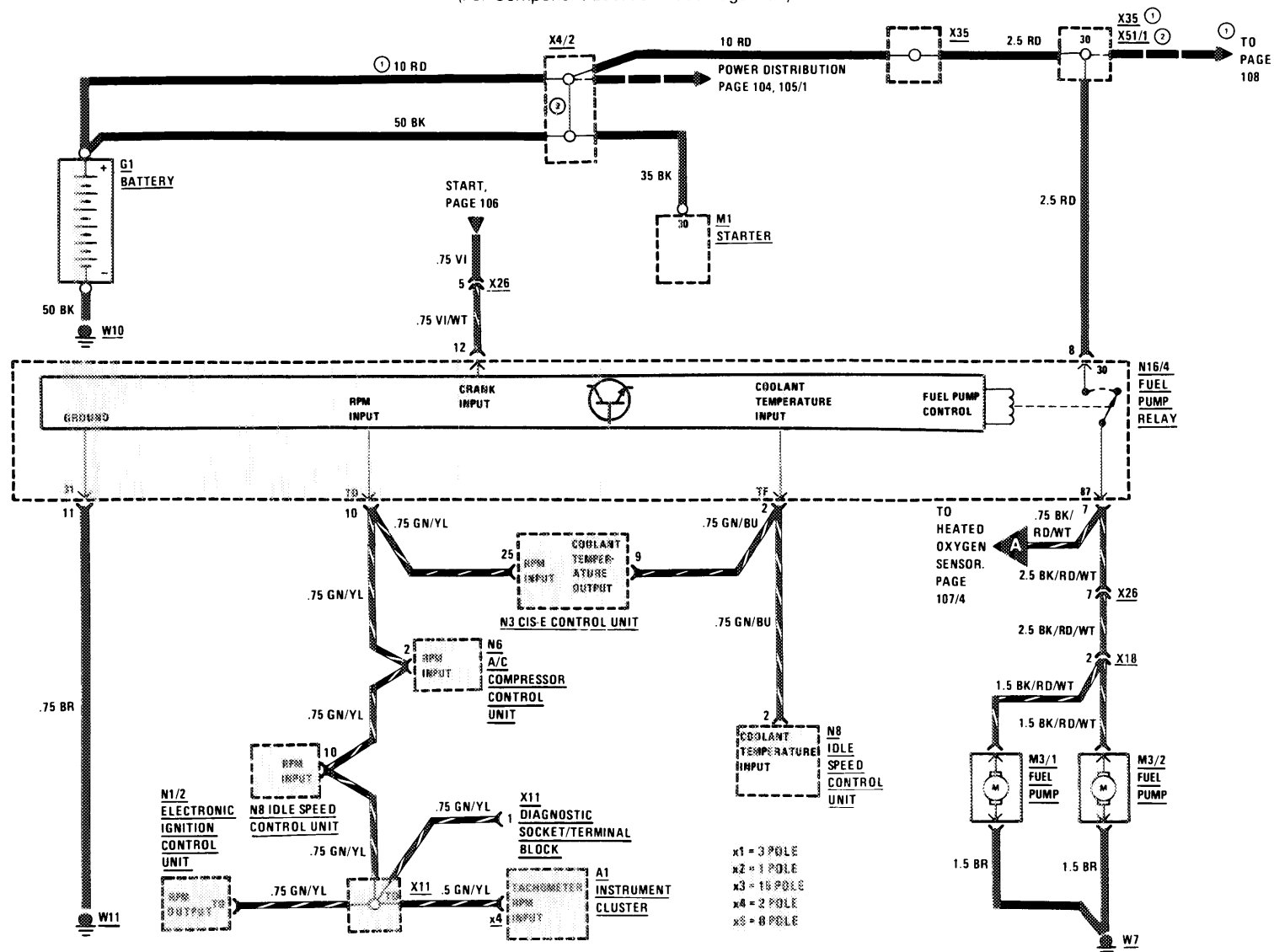


REVISIONS:

FUEL DELIVERY

(For Component Locations See Page 207)

AS OF MY 1986



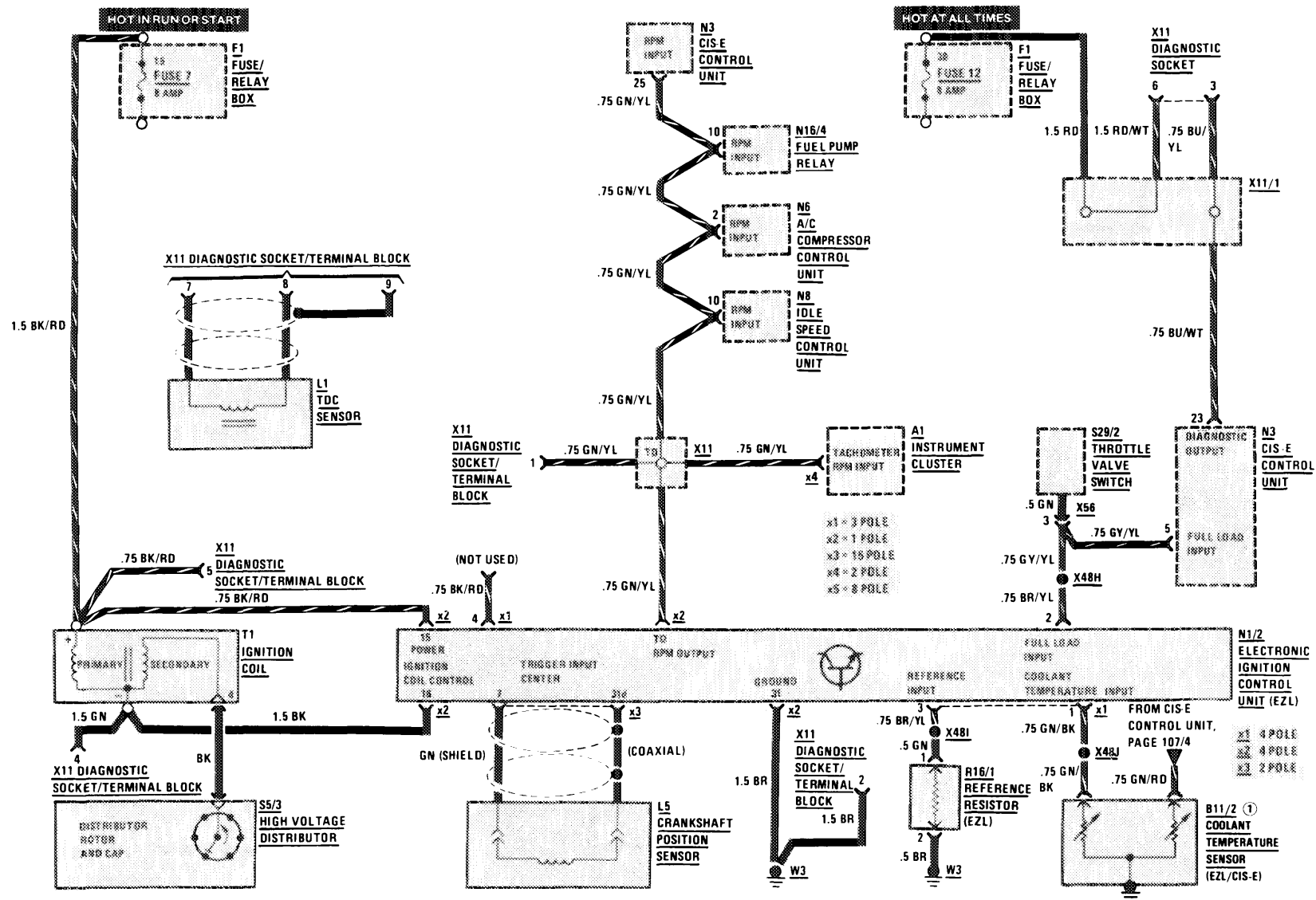
REVISIONS: ① MY 1986 ONLY
② AS OF MY 1987

AS OF MY 1986



(For Component Locations See Page 207)

AS OF MY 1986

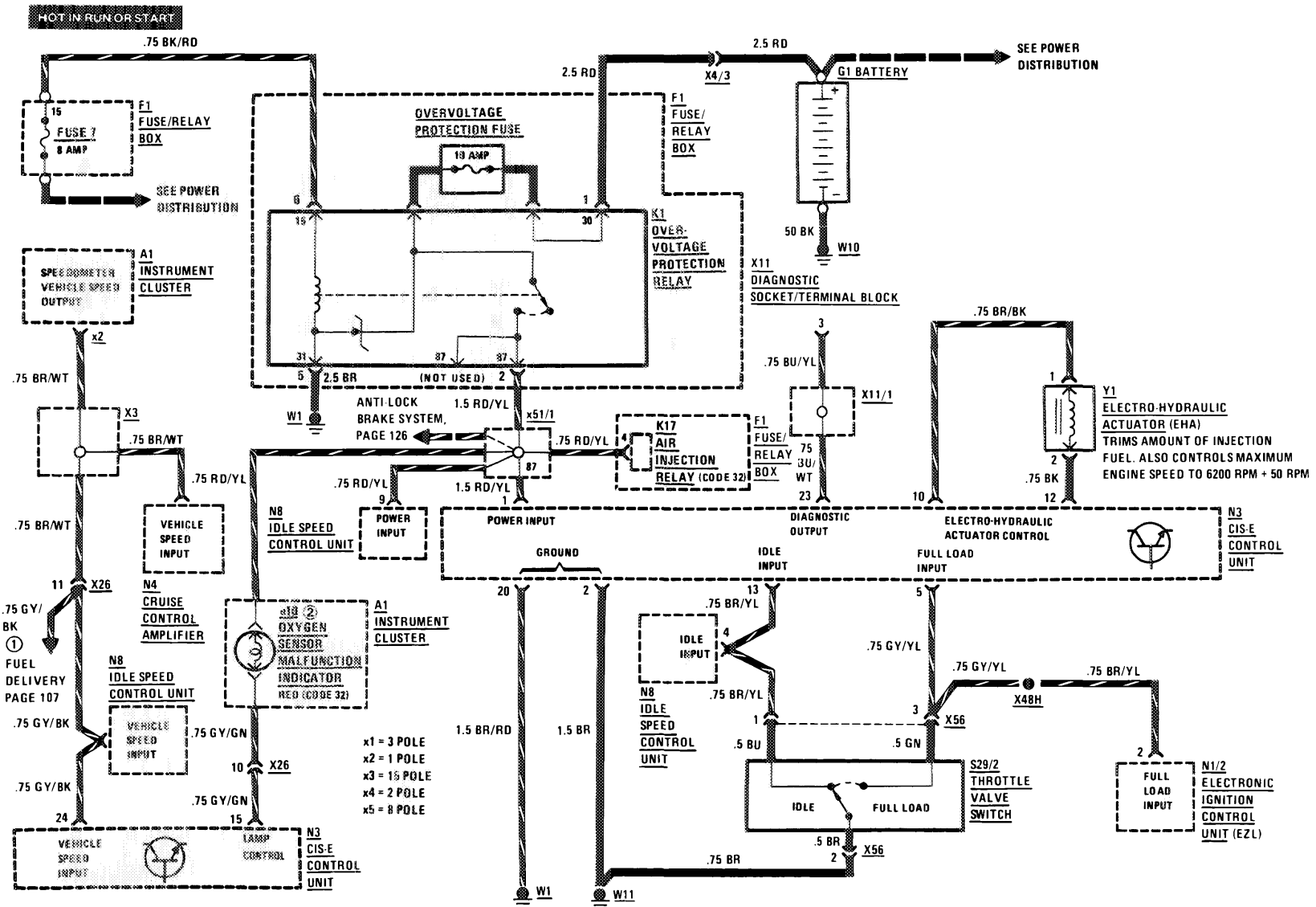


REVISIONS: ① SEE PAGE 107/7 FOR 4-POLE CALIF. VERSION OF B11/2

ELECTRONIC ENGINE CONTROLS/DIAGNOSTIC SOCKET

(For Component Locations See Page 205)

AS OF MY 1986
UP TO MY 1987 CALIFORNIA



REVISIONS: ① AS OF MY 1987 (LATE PRODUCTION)
② A1e26 "CHECK ENGINE" WARNING LAMP AS OF MY 1988

107/3

107.048

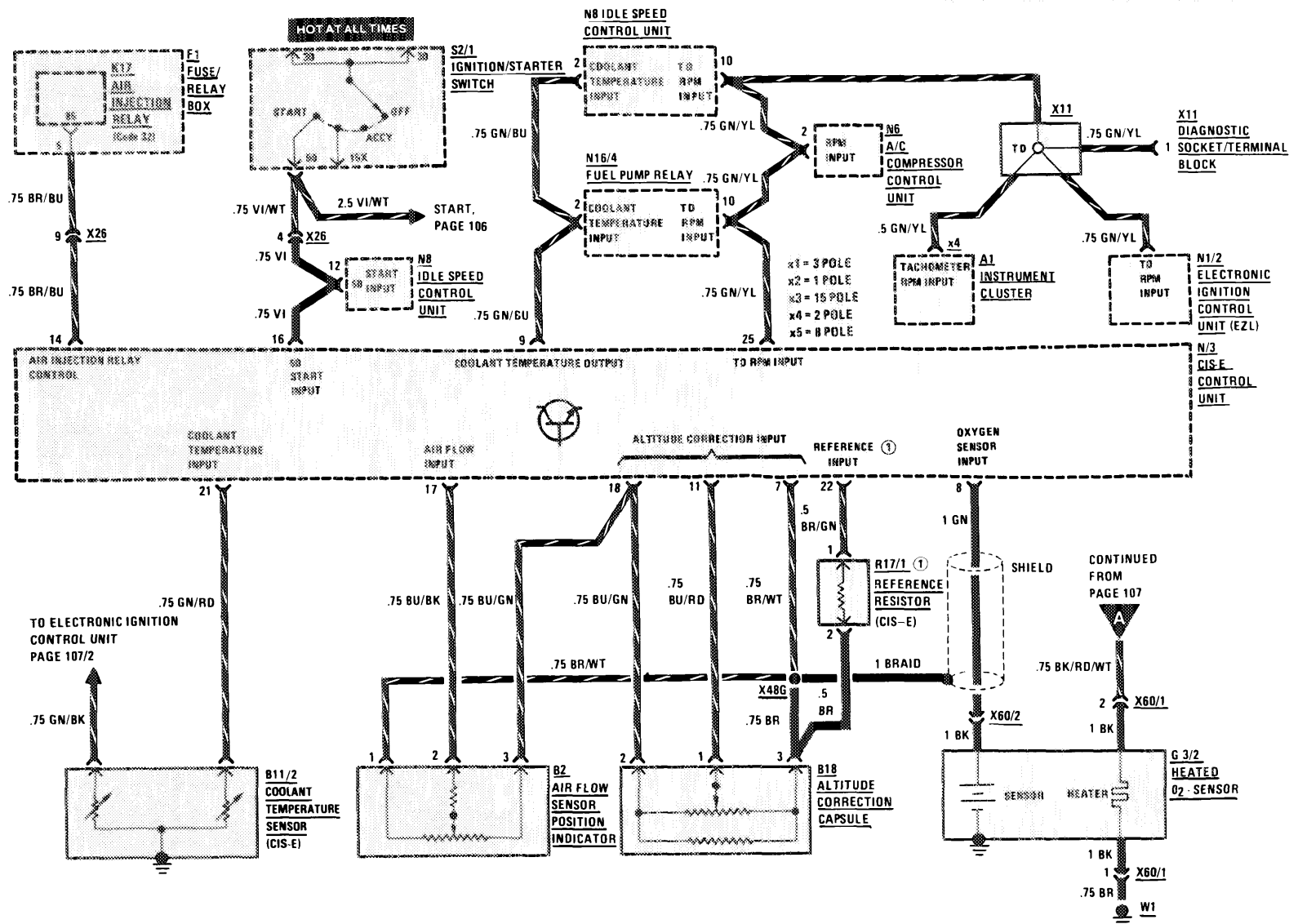
3/88

ELECTRONIC ENGINE CONTROLS

(For Component Locations See Page 205)

AS OF MY 1986

UP TO MY 1987 CALIFORNIA



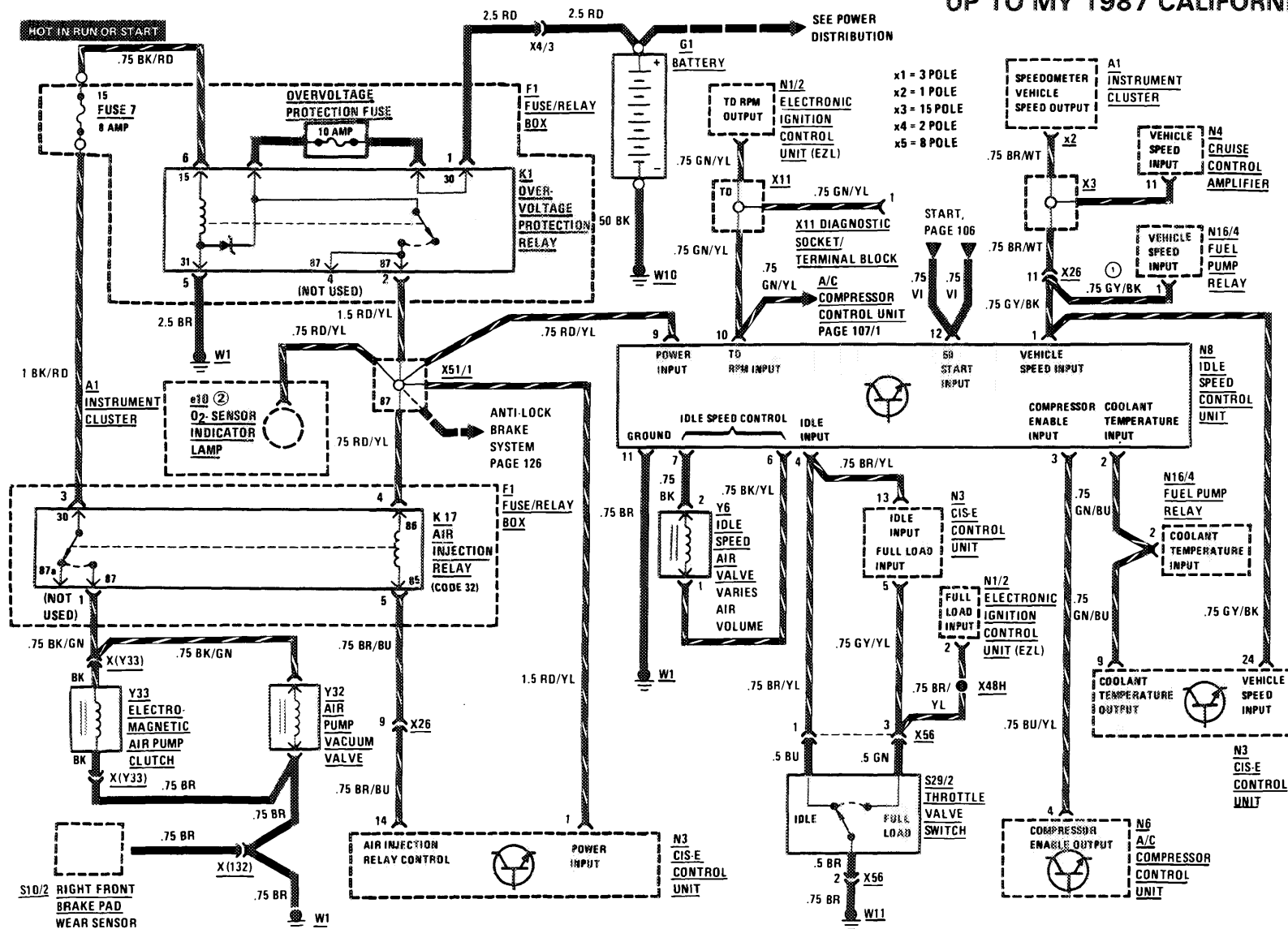
REVISIONS: ① MY 1986 AND 1987 ONLY

AIR INJECTION MANAGEMENT/IDLE SPEED STABILIZATION

(For Component Locations See Page 205)

AS OF MY 1986

UP TO MY 1987 CALIFORNIA



REVISIONS: ① AS OF MY 1987 (LATE PRODUCTION)
② A1e26 "CHECK ENGINE" WARNING LAMP AS OF MY 1988

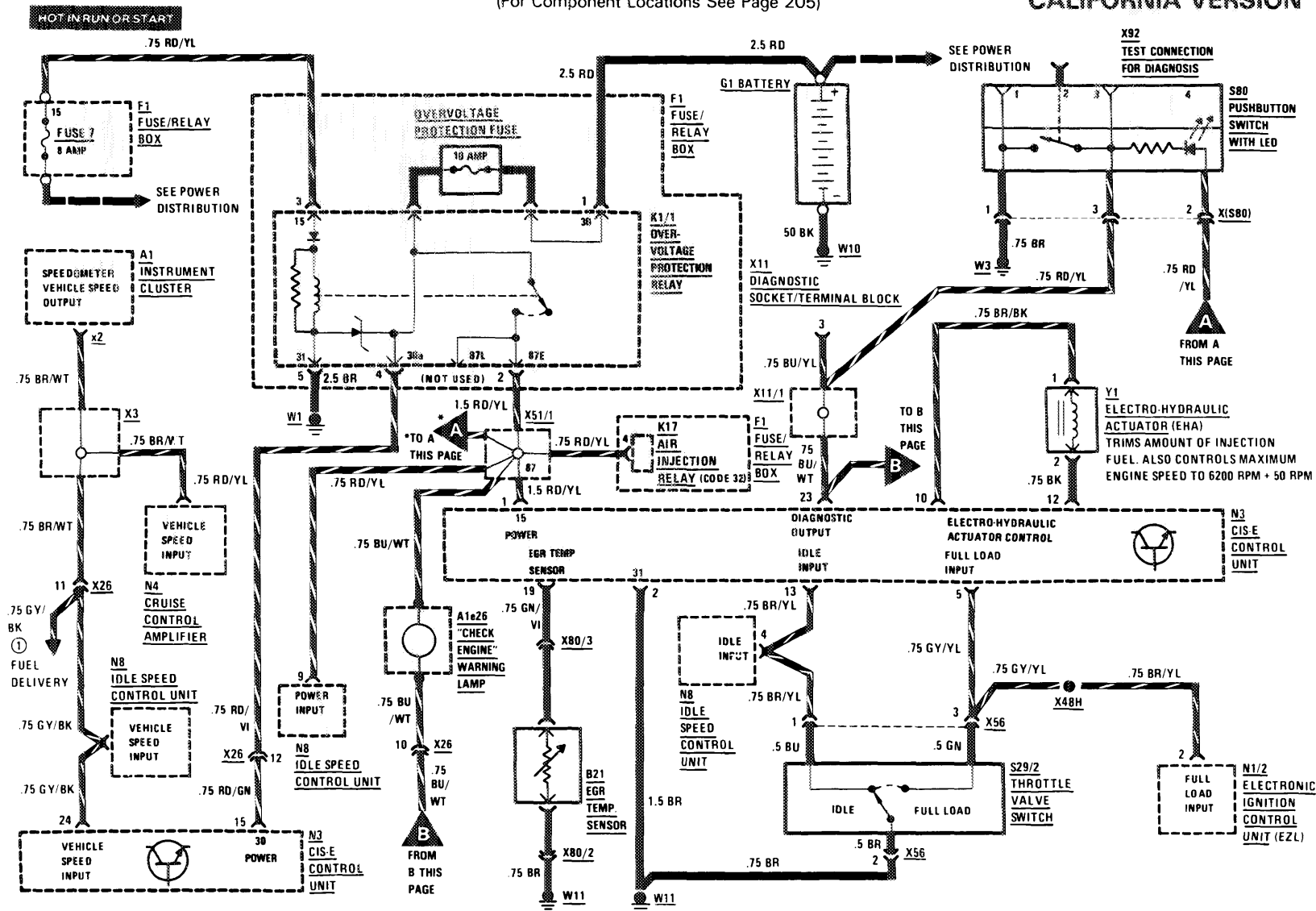
107/5

107.048

3/88

AS OF MY 1988
CALIFORNIA VERSION

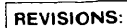
(For Component Locations See Page 205)



REVISIONS:

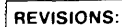
$$\frac{3}{88}$$

**AS OF MY 1988
CALIFORNIA VERSION**



AS OF MY 1988

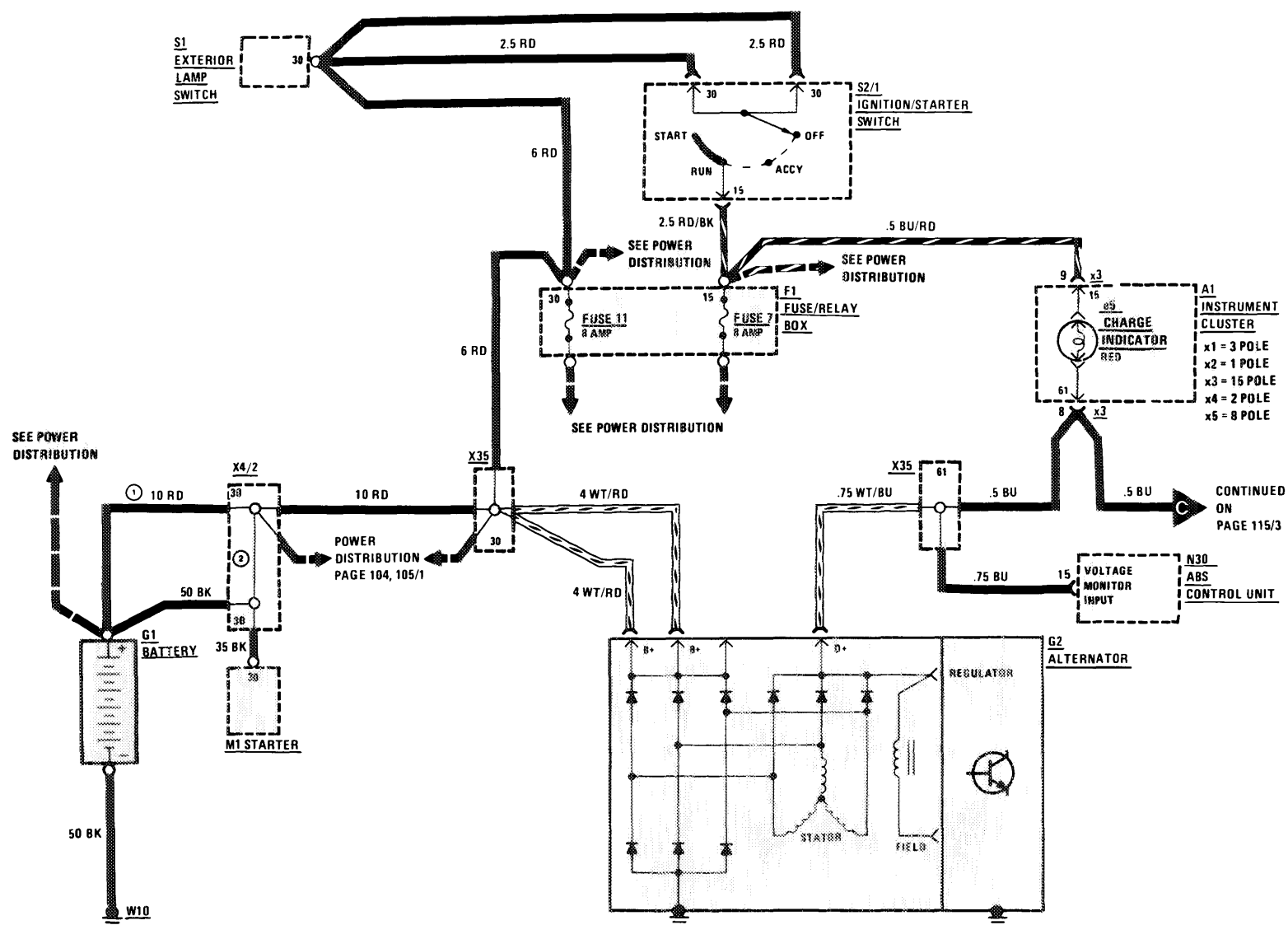
CALIFORNIA VERSION



107/8

AS OF MY 1986

(For Component Locations See Page 204)



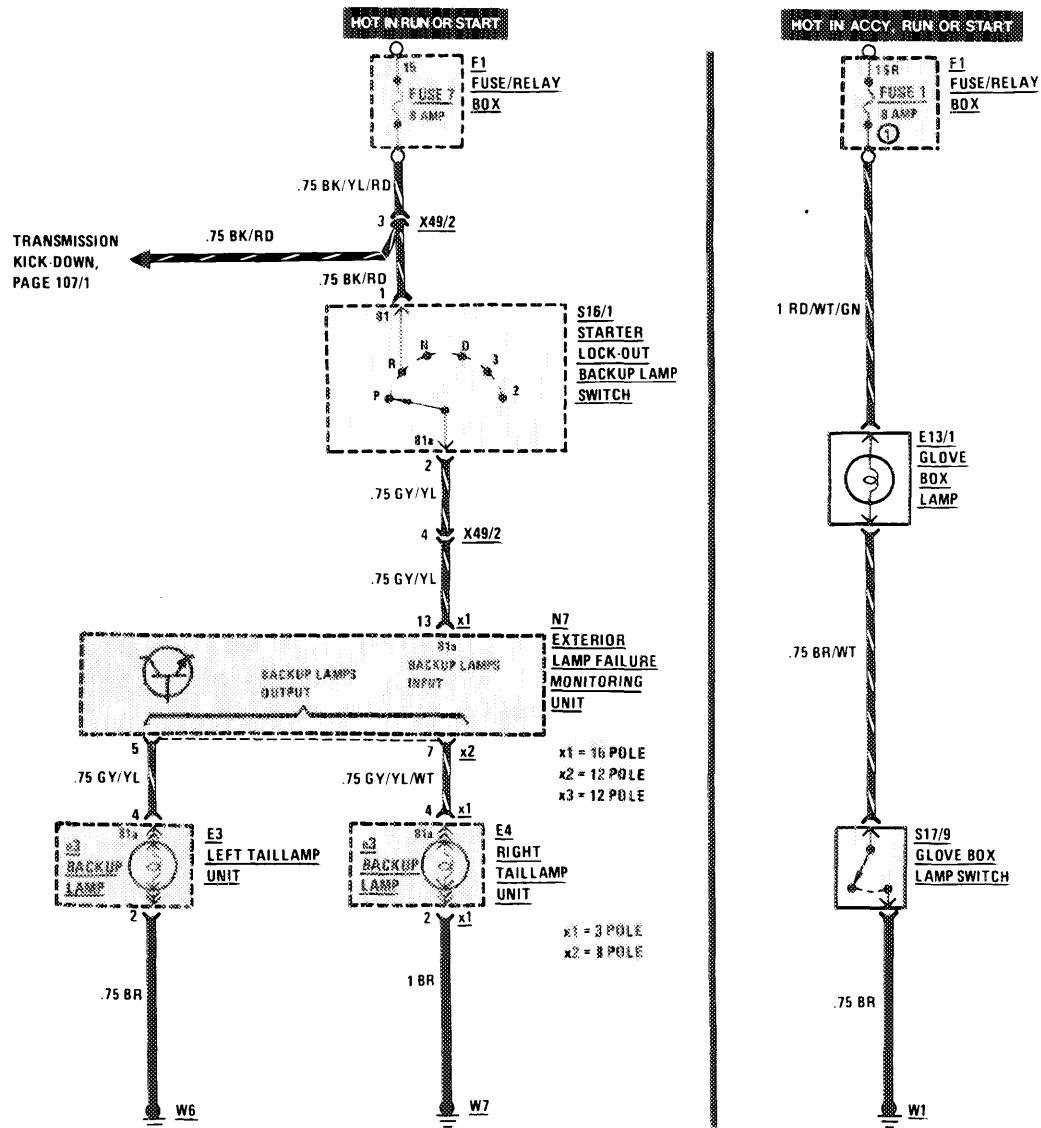
REVISIONS: ① MY 1986 ONLY
② AS OF MY 1987

BACKUP LAMPS

GLOVE BOX LAMP

AS OF MY 1986

(For Component Locations See Page 203)

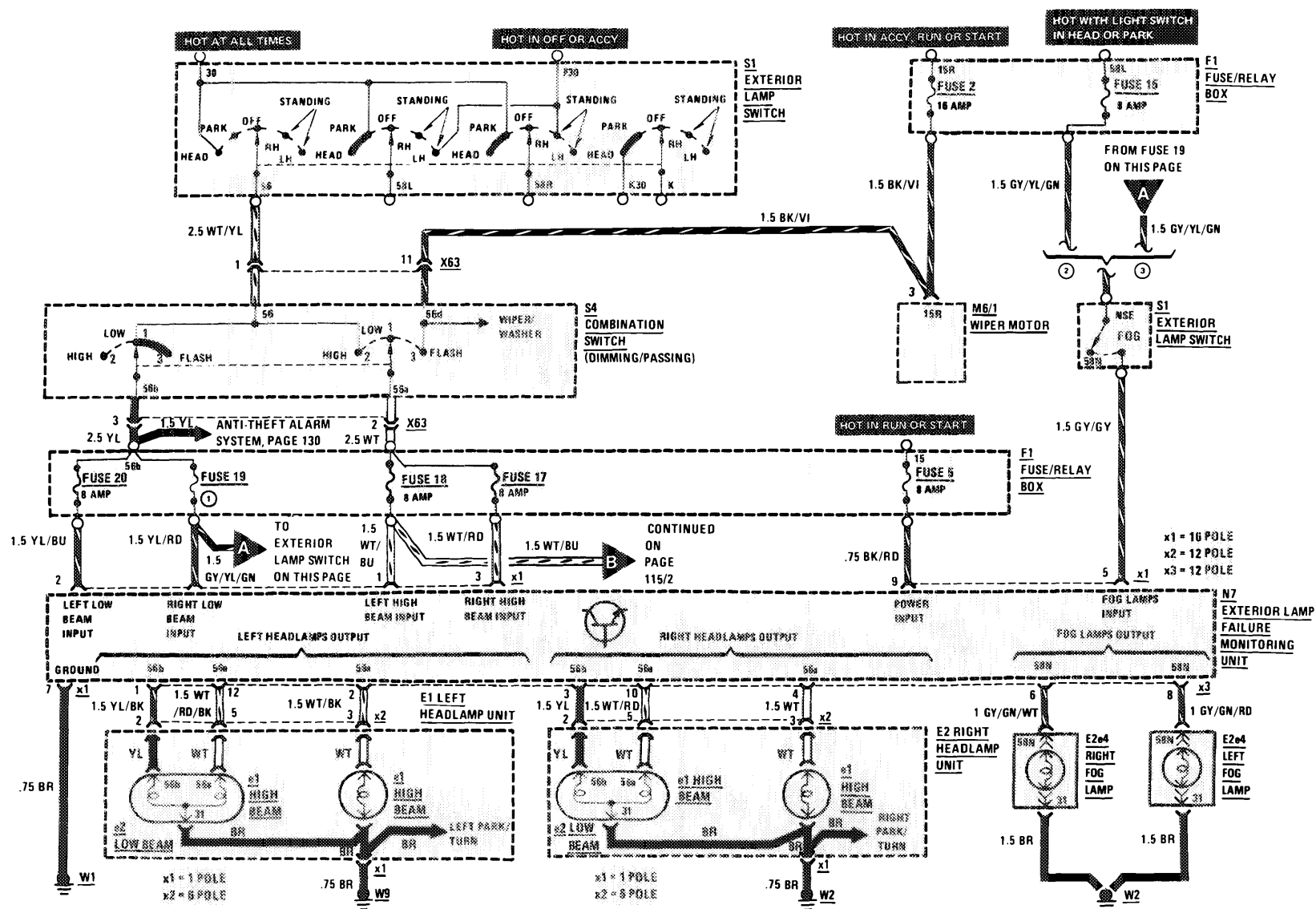


REVISIONS: ① 16 AMP (WHEN EQUIPPED WITH HEATED SEATS)

HEADLAMPS/FOG LAMPS

(For Component Locations See Page 206)

AS OF MY 1986

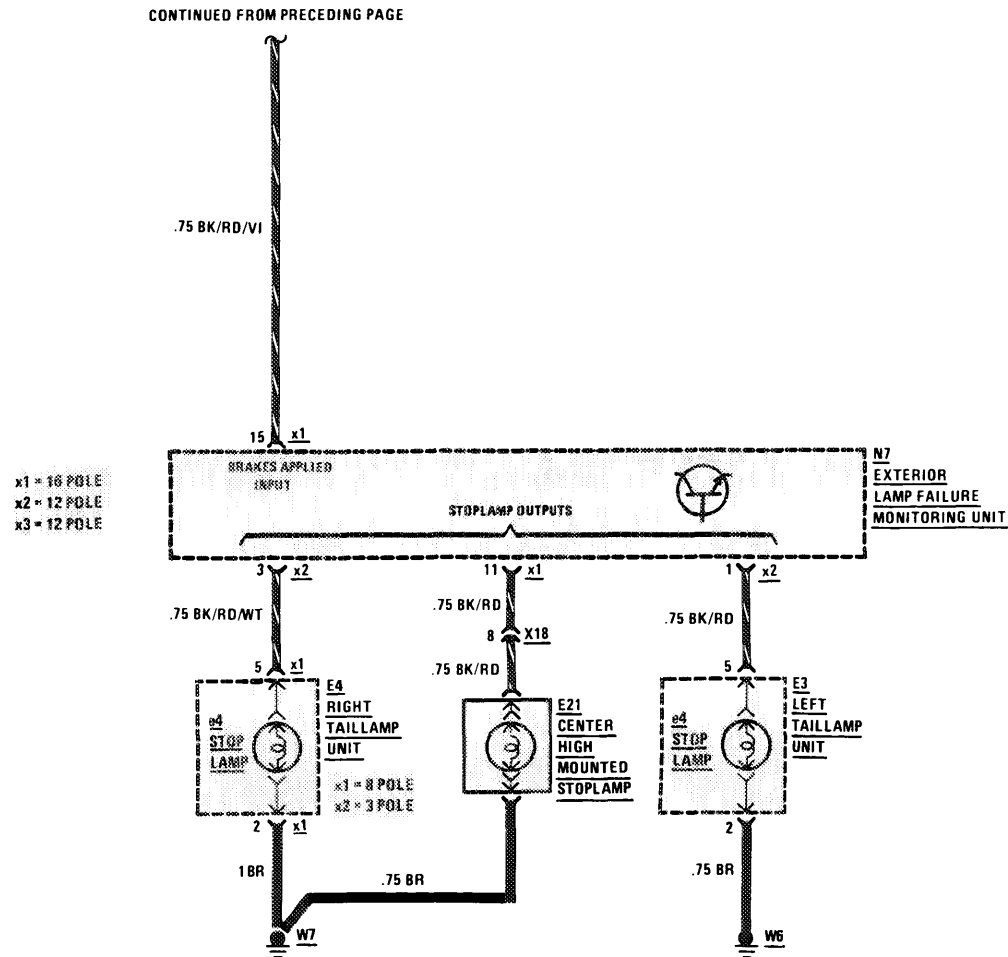


REVISIONS: ① 8 AMP BEFORE A038208; 16 AMP AFTER A038208 (MY 1986)
 ② BEFORE A038208 (MY 1986)
 ③ AFTER A038208 (MY 1986)

STOP LAMPS/CRUISE CONTROL

(For Component Locations See Page 211)

AS OF MY 1986



REVISIONS:

111/1

107.048

1/87

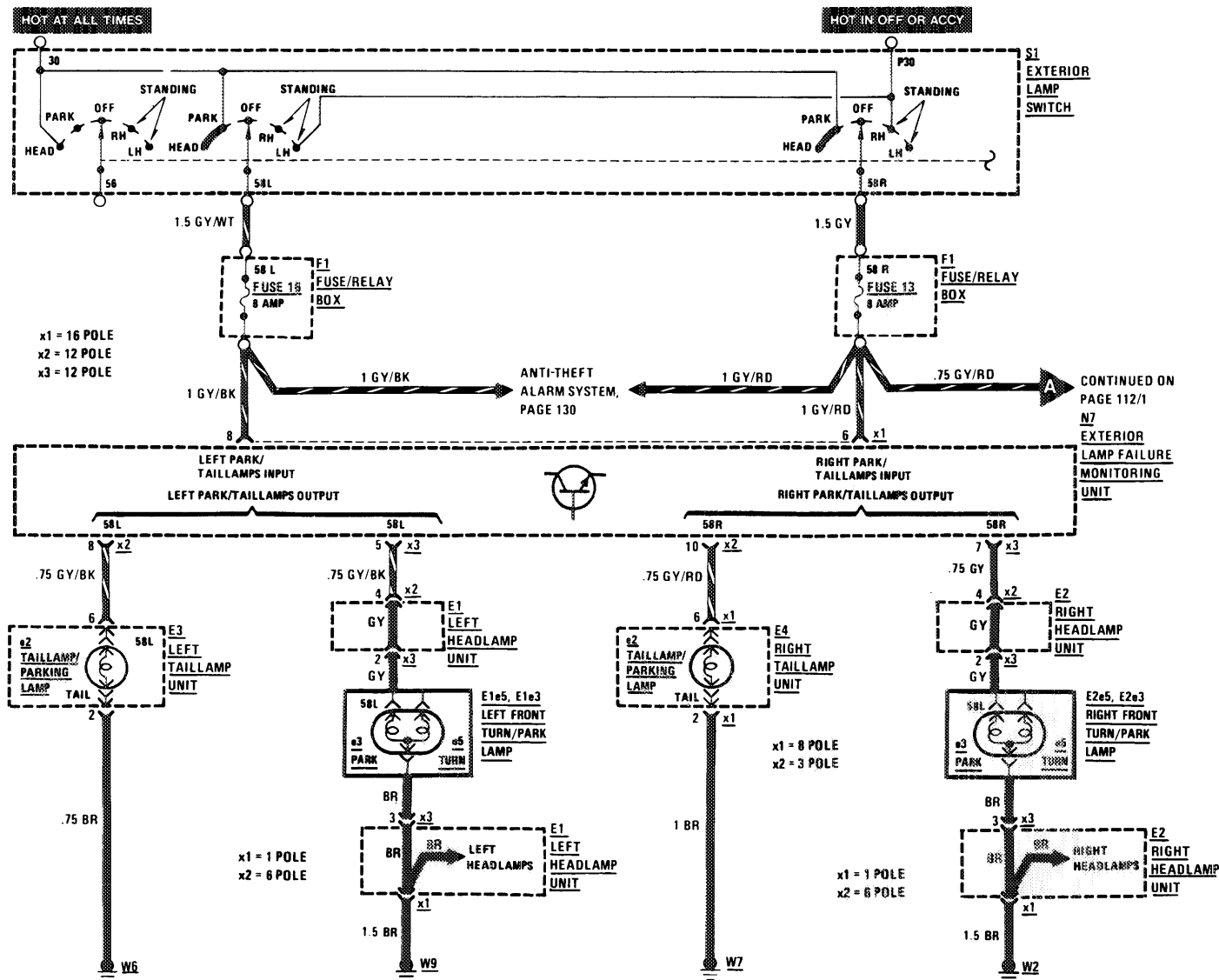
THIS PAGE LEFT BLANK INTENTIONALLY

REVISIONS:

LAMPS/PARK TAIL

(For Component Locations See Page 209)

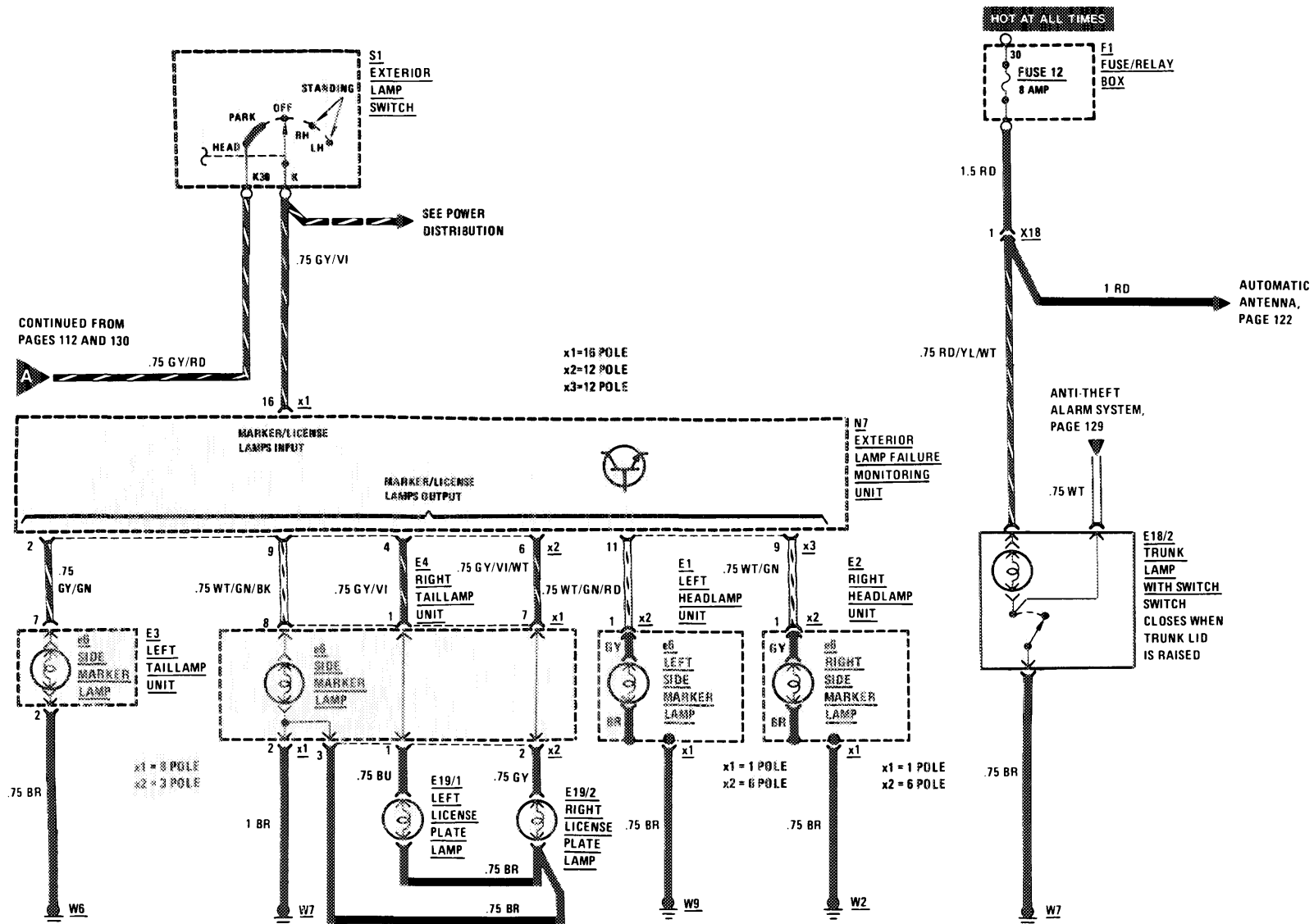
AS OF MY 1986



REVISIONS:

(For Component Locations See Page 209)

AS OF MY 1986



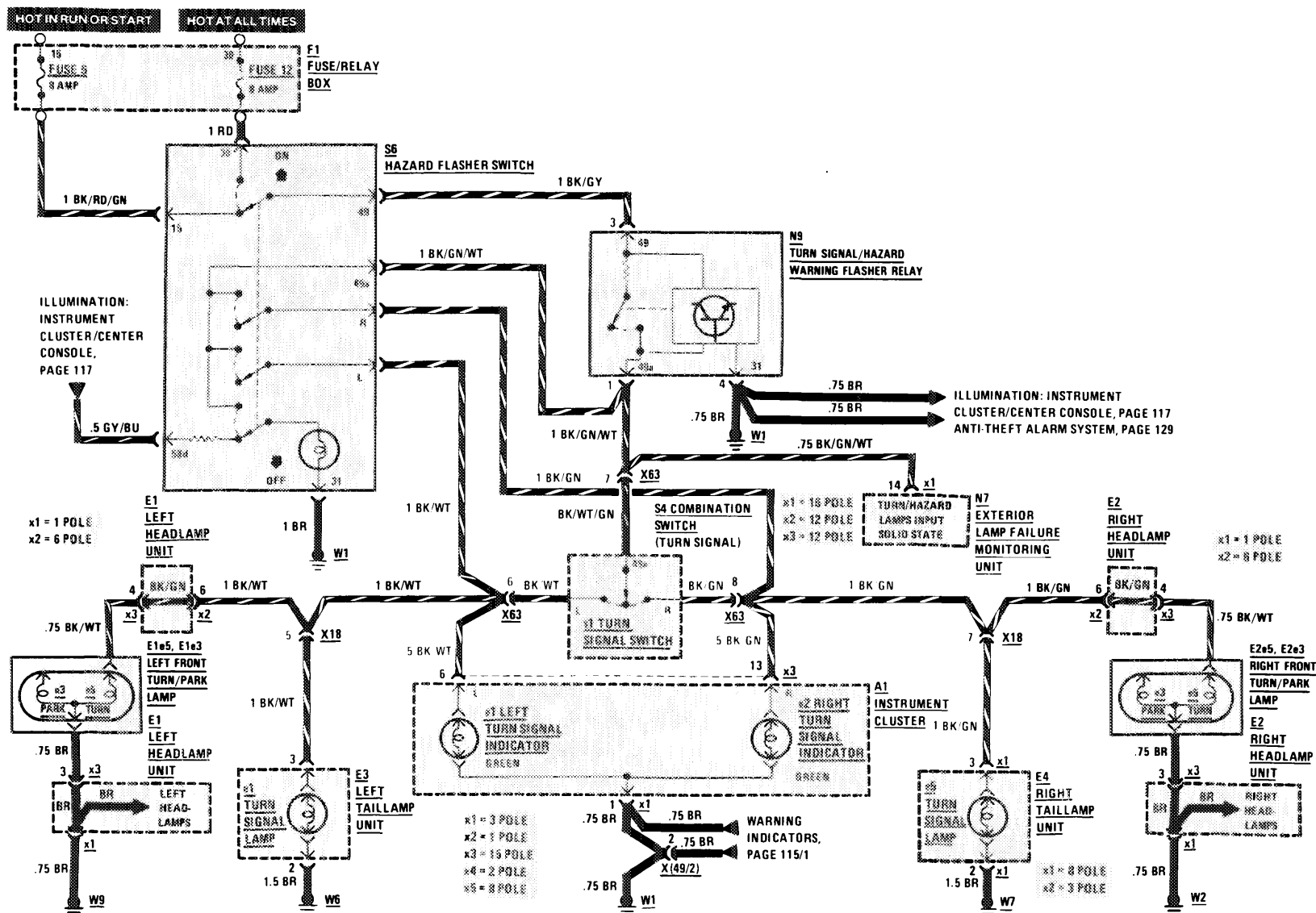
REVISIONS:

THIS PAGE LEFT BLANK INTENTIONALLY

REVISIONS:

(For Component Locations See Page 212)

AS OF MY 1986



REVISIONS:

AS OF MY 1986

x1 = 3 POLE
x2 = 2 POLE
x3 = 16 POLE
x4 = 2 POLE

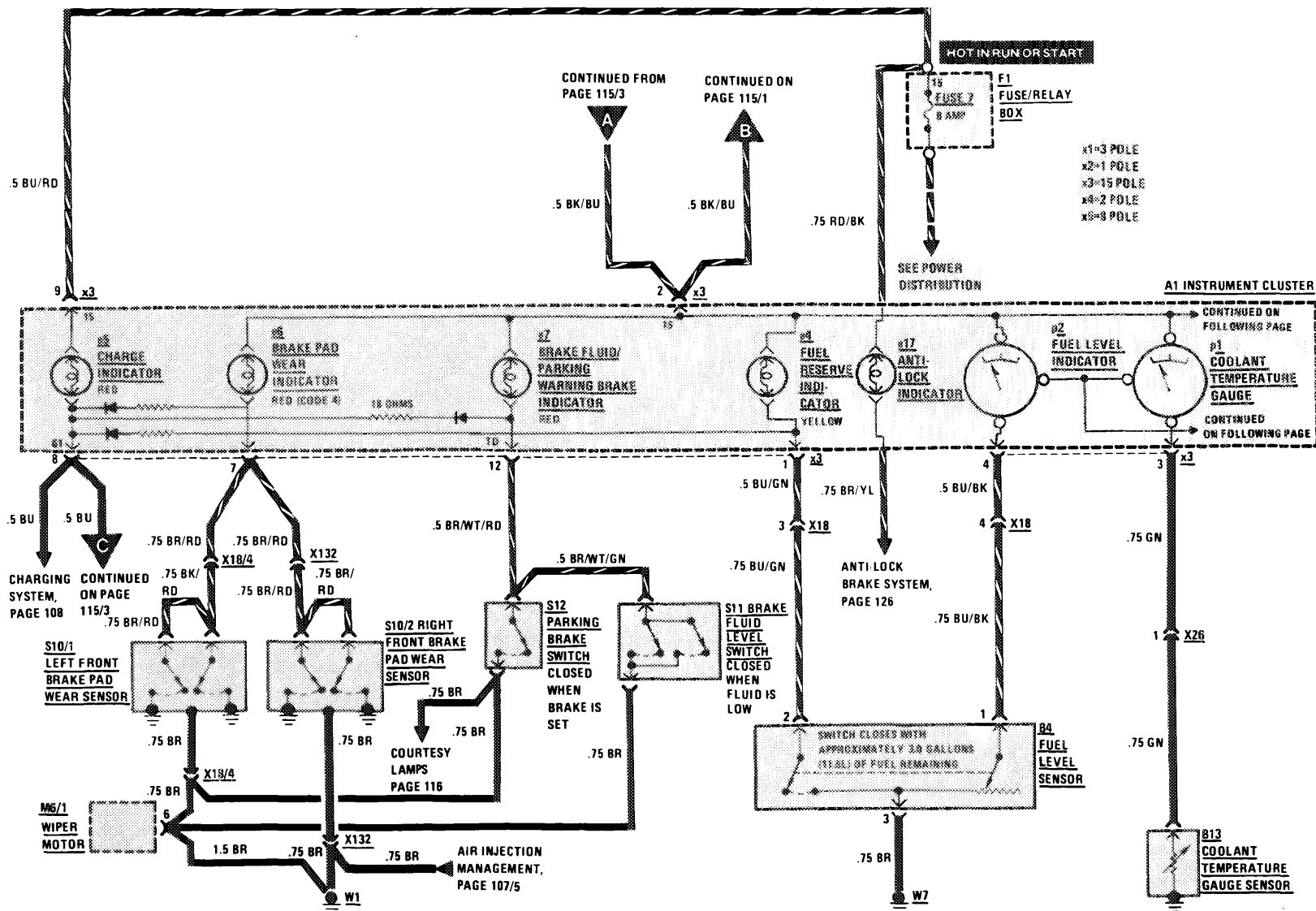


REVISIONS:

WARNING INDICATORS/GAUGES/CLOCK

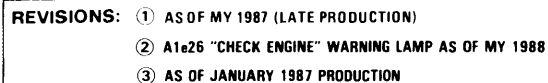
(For Component Locations See Page 213)

AS OF MY 1986



115/1

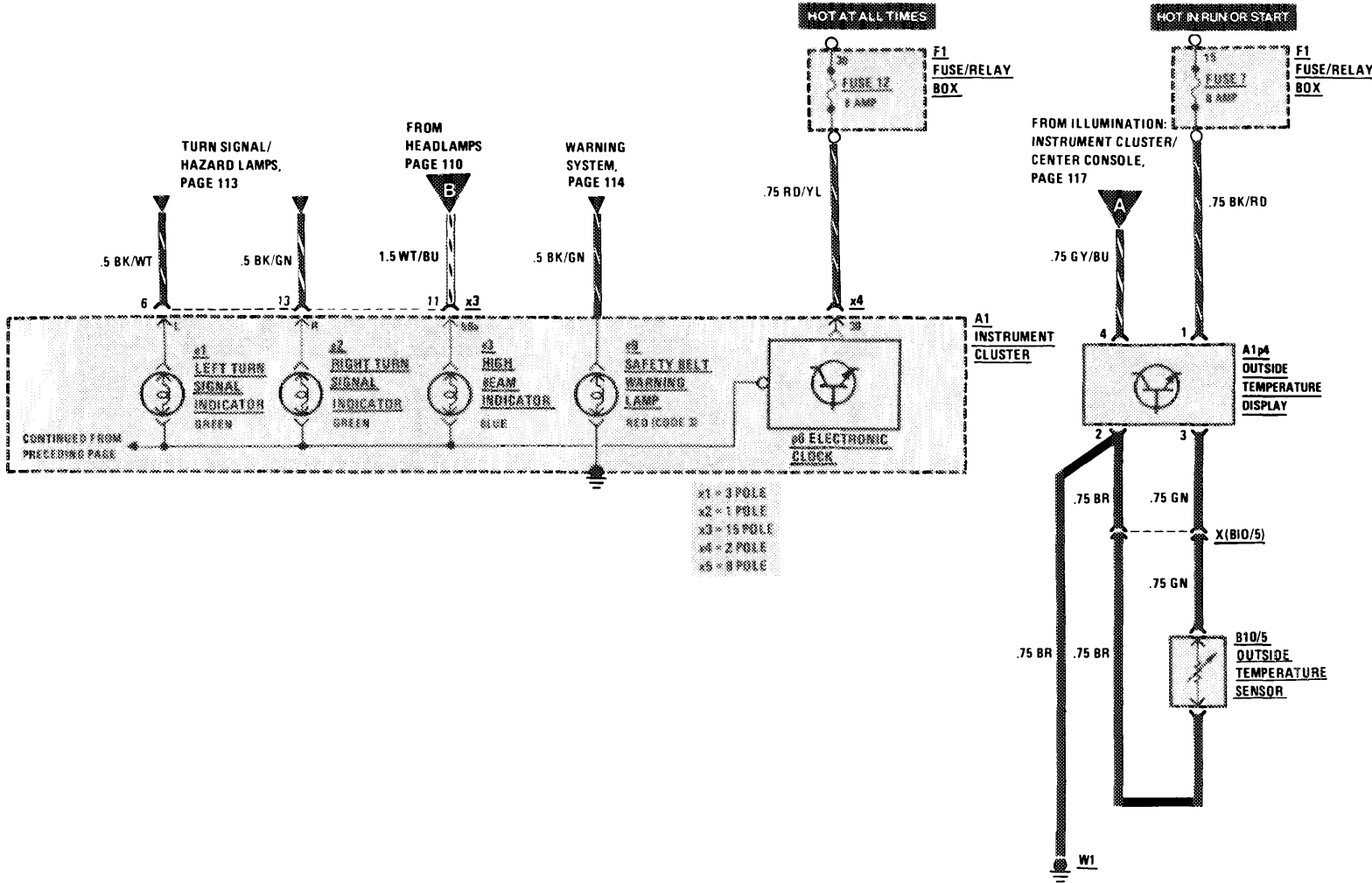
107.048

$$\frac{3}{88}$$


WARNING INDICATORS/GAUGES/CLOCK

(For Component Locations See Page 213)

AS OF MY 1986

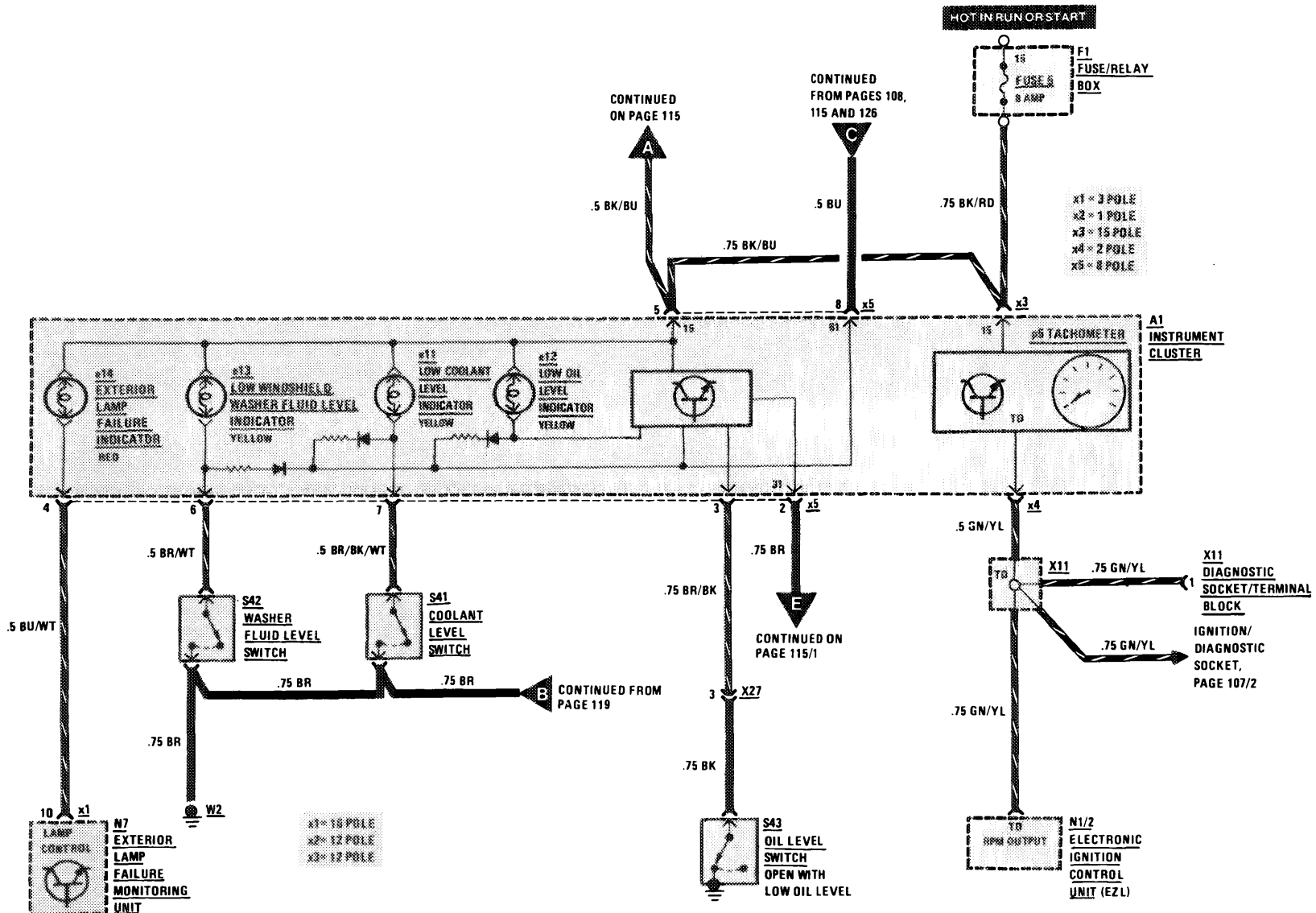


REVISIONS:

WARNING INDICATORS / GAUGES / CLOCK

(For Component Locations See Page 213)

AS OF MY 1986



REVISIONS:

THIS PAGE LEFT BLANK INTENTIONALLY

REVISIONS:
